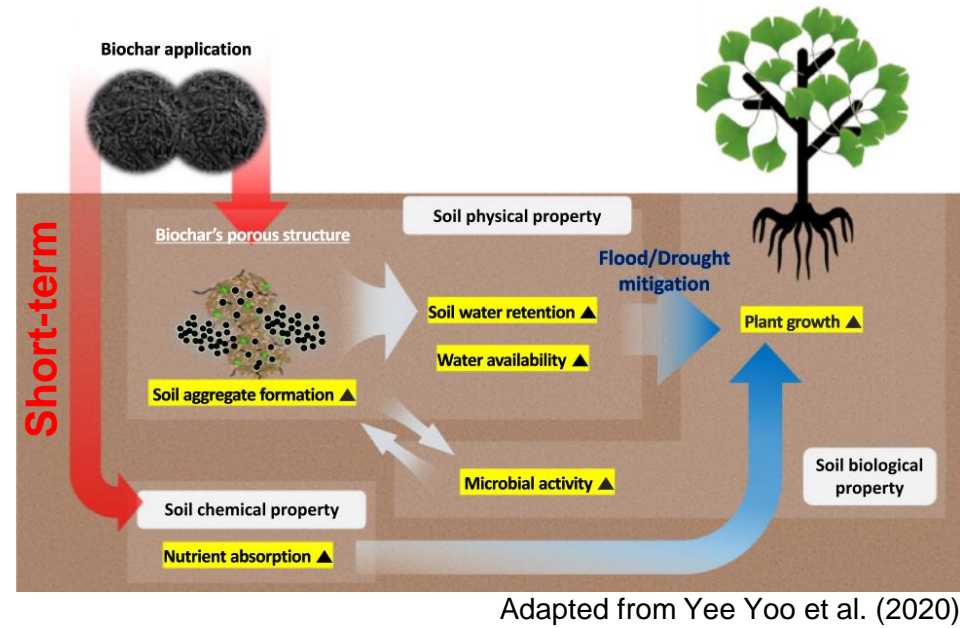


# Long-term effect of biochar on soil physical properties of agricultural soils with different textures

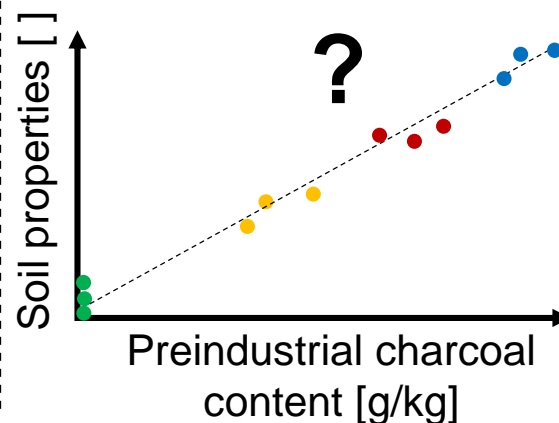
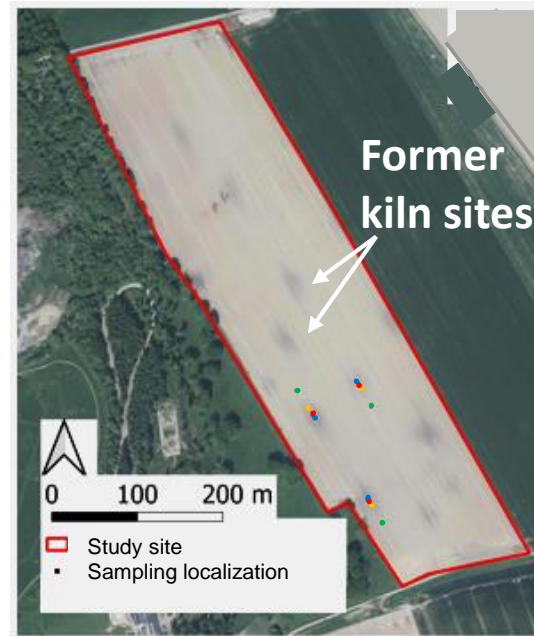
## 1) Introduction



## 2) Objectives

- (i) Long-term effect of the application of biochar on soil physical properties ?
- (ii) Does biochar's effect depend on soil texture ?

## 3) Methodology



## 4) Results

		SiL	L	SaL	All
Particle density		↓	↓	↓	↓
Bulk density			↓		↓
Porosity					
Water retention curve	$\theta_{sat}$			↑	↑
	$\theta_{pF=2}$			↑	↑
	$\theta_{pF=4.2}$				
	AWC		↑		↑
Conductivity curve	$\text{Log}(K_s)$				
	$\text{Log}(K_{pF=2})$	↑			
	$\text{Log}(K_{pF=4.2})$	↓			

$\theta$  water content  
 $K$  hydraulic conductivity  
 SiL silt loam soil (Gembloux)  
 L limonous soil (Yvoir)  
 SaL sandy loam soil (Attert)

No effect  
 Significant effect