



























RESEARCH ARTICLE OPEN ACCESS

Multiyear Drought Strengthens Positive and Negative Functional Diversity Effects on Tree Growth Response

Hernán Serrano-León^{1,2}  | Haben Blondeel³  | Paula Glenz¹ | Johannes Steurer¹  | Florian Schnabel¹  | Lander Baeten³  | Joannès Guillemot^{4,5}  | Nicolas Martin-StPaul⁶  | Georgios Skiadaresis^{1,7}  | Michael Scherer-Lorenzen²  | Damien Bonal⁸  | Matthieu Boone^{9,10}  | Renaud Decarsin^{4,6,11}  | Arsène Druel⁶  | Douglas L. Godbold^{12,13}  | Jialiang Gong (佳亮 龚)^{1,14,15}  | Peter Hajek²  | Hervé Jactel¹⁶  | Julia Koricheva¹⁷  | Simone Mereu^{18,19}  | Quentin Ponette²⁰  | Boris Rewald^{12,13}  | Hans Sandén¹³  | Jan Van den Bulcke^{10,21}  | Kris Verheyen³  | Ramona Werner^{13,22}  | Jürgen Bauhus¹ 

¹Chair of Silviculture, Faculty of Environment and Natural Resources, Institute of Forest Sciences, University of Freiburg, Freiburg, Germany | ²Chair of Geobotany, Faculty of Biology, University of Freiburg, Freiburg, Germany | ³Forest & Nature Lab, Department Environment, Ghent University, Melle-Gontrode, Belgium | ⁴CIRAD, INRAE, Institut Agro, IRD, Eco&Sols, Univ Montpellier, Montpellier, France | ⁵Forest Science Department, University of São Paulo/ESALQ, Piracicaba, Brazil | ⁶INRAE, Ecologie Des Forêts Méditerranéennes (URFM), Avignon, France | ⁷Hydrology Section, GFZ Helmholtz Centre for Geosciences, Potsdam, Germany | ⁸AgroParisTech, INRAE, UMR Silva, Université de Lorraine, Nancy, France | ⁹UGent-Radiation Physics, Department of Physics and Astronomy, Faculty of Sciences, Ghent University, Ghent, Belgium | ¹⁰UGent Center for X-Ray Tomography (UGCT), Ghent University, Ghent, Belgium | ¹¹French Environment and Energy Management Agency, Angers, France | ¹²Department of Forest Protection and Wildlife Management, Faculty of Forestry and Wood Technology, Mendel University in Brno, Brno, Czech Republic | ¹³Department of Forest and Soil Sciences, Institute of Forest Ecology, University of Natural Resources and Life Sciences, Vienna, Austria | ¹⁴Key Laboratory of Agro-Ecological Processes in Subtropical Region, Institute of Subtropical Agriculture, Chinese Academy of Sciences, Changsha, China | ¹⁵Huanjiang Agriculture Ecosystem Observation and Research Station of Guangxi, Guangxi Key Laboratory of Karst Ecological Processes and Services, Huanjiang Observation and Research Station for Karst Ecosystems, Chinese Academy of Sciences, Huanjiang, China | ¹⁶INRAE, University of Bordeaux, Cestas, France | ¹⁷Department of Biological Sciences, Royal Holloway University of London, Surrey, UK | ¹⁸Consiglio Nazionale Delle Ricerche, Istituto per la Bioeconomia, CNR-IBE, Sassari, Italy | ¹⁹IAPES Division, CMCC—Centro Euro-Mediterraneo sui Cambiamenti Climatici, Sassari, Italy | ²⁰Earth and Life Institute, Université Catholique de Louvain, Louvain-la-Neuve, Belgium | ²¹UGent-Woodlab, Laboratory of Wood Technology, Department of Environment, Faculty of Bioscience Engineering, Ghent University, Ghent, Belgium | ²²School of Integrative Plant Science, Cornell University, Ithaca, New York, USA

Correspondence: Hernán Serrano-León (hernan.serrano-forest@outlook.com)

Received: 7 November 2024 | **Revised:** 26 June 2025 | **Accepted:** 26 June 2025

Funding: This research was funded by the MixForChange project through the 2019–2020 BiodivERSA joint call for research proposals under the BiodivClim ERA-Net COFUND program, and with the funding organizations ANR (ANR-20-EBI5-0003), BELSPO, DFG (project number 451394862), FAPESP, FWF (I 5086-B) and FORMAS (2020–02339). Sampling and measurement campaigns was additionally financed partly by the CAMBIO project funded under the Climate & Biodiversity Initiative of the BNP Paribas Foundation. H.S.-L. was partially funded by MixForChange project and the University of Freiburg for sampling and measurements, and self-financed for analysis and manuscript writing. J.V.d.B. was financed with a BOF starting (Grant BOFSTG2018000701). B.R. and D.L.G. were partially funded by the EU Horizon project EXCELLENTIA (Grant 101087262) at Mendel University in Brno. UGCT was supported by the Special Research Fund (Bijzonder Onderzoeksfonds, BOF) of the Flemish government as a Centre of Expertise (BOF.EXP.2017.0007) and as a Core Facility (BOF.COR.2022.008), and by the Research Foundation-Flanders (FWO) for the ACTREAL (G019521N) and XyloDynaCT (G009720N) projects. FORBIO-Gedinne experiment is maintained with partial support by the Walloon forest service (SPW—DNF) in the frame of the 5-yr research programme “Plan quinquennal de recherche et de vulgarisation forestières.” BIOTREE-Kaltenborn experiment was established by the Max-Planck-Institute for Biogeochemistry Jena, Germany, and is maintained by the Federal Forestry Office Thüringer Wald (Bundesforstamt Thüringer Wald). IDENT-Freiburg experiment was established with support by University of Freiburg (Innovationsfonds Forschung).

Keywords: biodiversity-ecosystem functioning | drought stress | functional traits | mixed-species forests | tree diversity | tree rings | TreeDivNet | X-ray computed tomography

This is an open access article under the terms of the [Creative Commons Attribution](https://creativecommons.org/licenses/by/4.0/) License, which permits use, distribution and reproduction in any medium, provided the original work is properly cited.

© 2025 The Author(s). *Global Change Biology* published by John Wiley & Sons Ltd.

ABSTRACT

Mixed-species forests are proposed to enhance tree resistance and resilience to drought. However, growing evidence shows that tree species richness does not consistently improve tree growth responses to drought. The underlying mechanisms remain uncertain, especially under unprecedented multiyear droughts. We used a network of planted tree diversity experiments to investigate how neighborhood tree diversity and species' functional traits influence individual tree responses to drought. We analyzed tree cores (948 trees across 16 species) from nine young experiments across Europe featuring tree species richness gradients (1–6 species), which experienced recent severe droughts. Radial growth response to drought was quantified as tree-ring biomass increment using X-ray computed tomography. We applied hydraulic trait-based growth models to analyze single-year drought responses across all sites and site-specific responses during consecutive drought years. Growth responses to a single-year drought were partially explained by the focal species' hydraulic safety margin (representing species' drought tolerance) and drought intensity, but were independent of neighborhood species richness. The effects of neighborhood functional diversity on growth responses shifted from positive to negative with increasing drought duration during a single growing season. Tree diversity effects on growth responses strengthened during consecutive drought years and were site-specific with contrasting directions (both positive and negative). This indicates opposing diversity effects pathways under consecutive drought events, possibly resulting from competitive release or greater water consumption in diverse mixtures. We conclude that tree diversity effects on growth under single-year droughts may differ considerably from responses to consecutive drought years. Our study highlights the need to consider trait-based approaches (specifically, hydraulic traits) and neighborhood scale processes to understand the multifaceted responses of tree mixtures under prolonged drought stress. This experimental approach provides a robust framework to test biodiversity-ecosystem functioning (BEF) relationships relevant for young, planted forests under increased drought stress.

1 | Introduction

Drought events of increased frequency, intensity, and duration are globally causing large-scale forest dieback and mortality (Schuldt et al. 2020; Senf et al. 2020; Hartmann et al. 2022). Under intensifying climate change, multiyear extreme drought events are expected to become more frequent in the future, as evidenced by the record-breaking 2018–2020 drought in Central Europe (Hari et al. 2020; Rakovec et al. 2022; Zscheischler and Fischer 2020). Consecutive drought years can exacerbate initial drought impacts owing to cumulative soil water depletion (Anderegg et al. 2020; Schnabel et al. 2022). Moreover, drought impacts can persist for several years following a drought event, so-called drought legacy effects (Kannenberg et al. 2020; Anderegg et al. 2015; Wu et al. 2018). These abiotic (accumulated water deficit) and biotic (vegetation response) legacy effects can lead to increased vulnerability to subsequent droughts (Kannenberg, Novick, et al. 2019; Müller and Bahn 2022; Bastos et al. 2021). Tree and ecosystem responses to prolonged drought effects can differ largely depending on site conditions (Bose et al. 2024; Gazol, Camarero, Sánchez-Salguero, et al. 2020; Kannenberg, Maxwell, et al. 2019), drought tolerance of tree species (Gazol, Camarero, Sangüesa-Barreda, et al. 2020), and different drought characteristics such as frequency, duration, severity, and timing (Anderegg et al. 2013; Huang et al. 2018; Guisset et al. 2024). Given the unprecedented nature of multiyear drought events, there is a large uncertainty about the efficiency of adaptive forest management strategies to face these events.

Increasing tree diversity in forests has been suggested to foster the resistance, resilience, and adaptive capacity of forests to cope with drought impacts (Schnabel et al. 2021; Jucker et al. 2014; Messier et al. 2022). However, increasing tree species richness alone might not necessarily improve trees' ability to face increasing drought stress. Studies reported that the effect of tree diversity can vary from positive or neutral effects under mild drought stress

to negative under severe droughts (Haberstroh and Werner 2022; Forrester et al. 2016; Grossiord 2019). The impacts of tree diversity on the drought response might also differ between single-year droughts and multiyear droughts, characterized by cumulative drought stress and legacy effects (Kannenberg et al. 2020; Mahecha et al. 2024). However, since most research has focused on single-year drought events, the role of tree diversity in buffering multi-year drought impacts remains unclear.

To gain a better understanding, we propose two contrasting conceptual pathways of tree diversity effects under consecutive drought conditions. In the first pathway (Figure 1a), increased functional diversity buffers the impacts of the initial drought, and this positive diversity effect becomes more pronounced under consecutive droughts. This aligns with the stress-gradient hypothesis, where facilitative interactions outweigh competition during increased stress (Bertness and Callaway 1994). Functional diversity can reduce competition for soil water and mitigate drought stress through multiple mechanisms related to resource partitioning and facilitation, for example, complementary stomatal regulation or root stratification strategies (Loreau and Hector 2001; Trogisch et al. 2021; Mas, Vilagrosa, et al. 2024), hydraulic redistribution (Forrester and Bauhus 2016; Bauhus et al. 2017), or improved microclimate through shading and evapotranspirative cooling (Beugnon et al. 2024; Zhang et al. 2022; Schnabel, Beugnon, et al. 2024). These mechanisms allow trees in diverse mixtures to maintain hydraulic function, growth, and carbon reserves, reducing vulnerability to both initial and subsequent droughts (McDowell et al. 2022; Mas, Cochard, et al. 2024). Functionally diverse forests may also maintain their buffering capacity and ecosystem function over time by stabilizing the community (Mahecha et al. 2024; Schnabel et al. 2021; Loreau et al. 2021). In the second pathway (Figure 1b), increased functional diversity may intensify drought stress, specifically under consecutive drought years. This pathway considers that diversity effects depend on

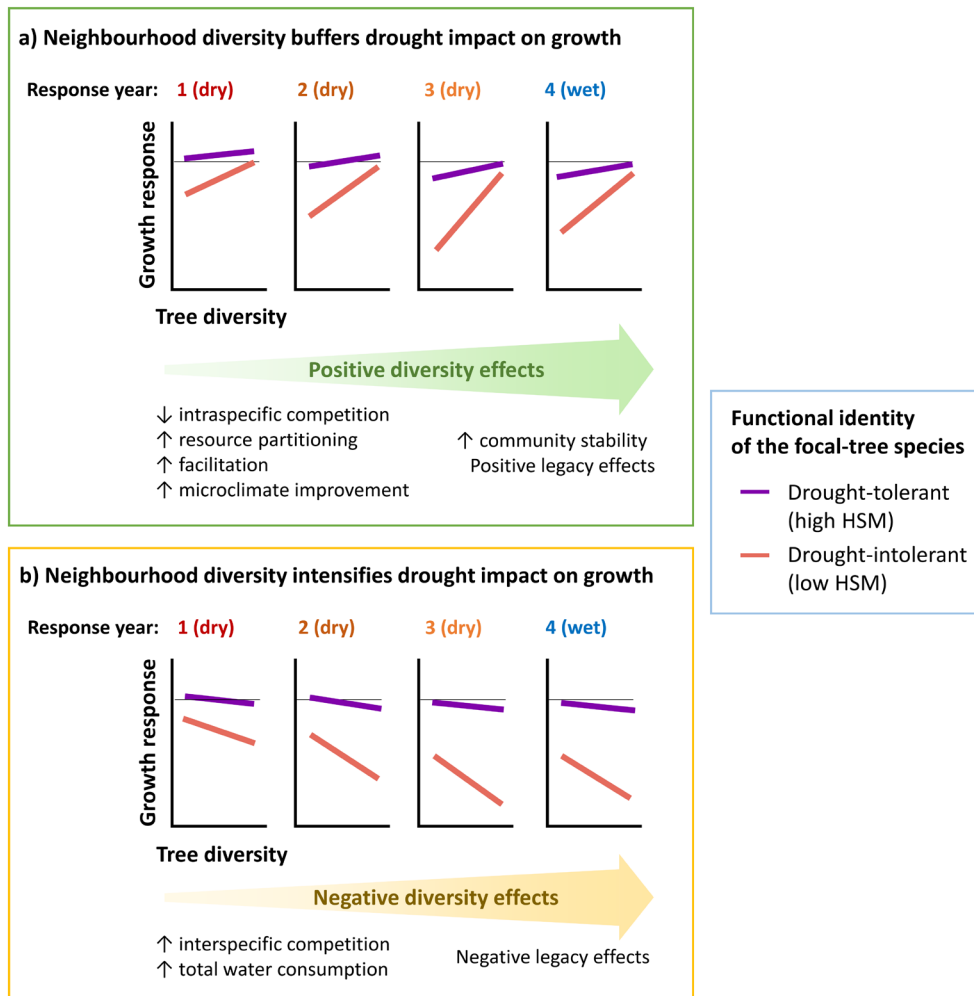


FIGURE 1 | Theoretical pathways for the role of neighborhood tree diversity and drought tolerance of the focal-tree species (quantified as hydraulic safety margin HSM_{TLP}) for determining growth responses under consecutive drought years. In the example, an initial drought is followed by two consecutive drought years and a post-drought year with wet conditions, similar to the drought conditions analyzed in this study. Growth response values below the horizontal line correspond to growth reductions relative to the reference pre-drought year. In the first pathway (a), functional diversity has an increasingly positive effect buffering the drought impacts on the growth response under consecutive drought stress. In the alternative pathway (b), functional diversity causes an intensification of water stress under consecutive drought years. In both cases, drought-intolerant species are particularly sensitive to drought and the tree diversity effect.

the stress tolerance and competitive ability of interacting species, becoming negative at the extremes of resource-driven stress gradients (Maestre et al. 2009; Soliveres et al. 2015). Under increased drought stress, complementary resource-use strategies in diverse mixtures might lead to higher exploitation of limited soil water and increased interspecific competition (Haberstroh and Werner 2022; Forrester et al. 2016). Increased water consumption in mixtures may also result from overyielding and higher leaf area during favorable conditions preceding drought (Jump et al. 2017; Jacobs et al. 2021) and selection effects (Grossiord 2019; Forrester and Bauhus 2016). Negative tree diversity effects might become more pronounced over time as drought stress is amplified by abiotic and biotic legacy effects (Kannenberg et al. 2020; Mahecha et al. 2024; Shovon et al. 2024). Ultimately, this could lead to the performance loss of drought-sensitive species in mixtures as competition for limited water intensifies (Jacobs et al. 2021; Sachsenmaier et al. 2024). Whether tree diversity mechanisms positively or negatively influence the growth responses under consecutive

drought conditions might strongly depend on tree species identity, mixture composition, and site context (Ratcliffe et al. 2017; Grossiord, Granier, Ratcliffe, et al. 2014; Pardos et al. 2021).

Contrasting reports of tree diversity effects on drought-induced growth responses indicate that the underlying biological mechanisms remain unclear. Most studies assess tree diversity effects solely by quantifying species richness at the stand level, thus overlooking the functional diversity at the local neighborhood scale, where facilitative and competitive interactions actually emerge (Fichtner et al. 2017; Trogisch et al. 2021). Recent advances in plant physiology highlight the role of plant hydraulic traits in mediating these responses (Torres-Ruiz et al. 2024). Among these traits, hydraulic safety margin (HSM) is a strong predictor of drought tolerance (Martínez-Vilalta and Garcia-Forner 2017; Choat et al. 2012), with higher HSM associated with lower risk of tree hydraulic failure under drought (Anderegg et al. 2016; Martin-StPaul et al. 2017). Higher hydraulic diversity in forest communities could enhance resilience and stabilize

ecosystem productivity during droughts (Anderegg et al. 2018; Schnabel et al. 2021). Functional traits of focal-tree species can also influence how tree diversity affects drought responses. Drought-vulnerable species have been reported to benefit from species-rich neighborhoods, while drought-tolerant species can be less sensitive to diversity effects (Fichtner et al. 2020; Schnabel, Barry, et al. 2024; Sachsenmaier et al. 2024; Göransson et al. 2016). Yet, these single-site studies from few experimental sites cannot elucidate the potential context dependency of neighborhood tree diversity effects on tree responses to drought. A comprehensive analysis following a trait-based neighborhood approach across multiple environmental conditions is still missing to understand how tree diversity and functional trait identity modulate tree susceptibility to drought.

Here, we present the first study to evaluate the effect of tree functional diversity on tree growth responses to single-year and multiyear droughts across nine planted tree diversity experiments in Europe. The examination of these experiments allowed us to study tree diversity effects in young tree communities growing under controlled experimental conditions while simultaneously covering varied environmental conditions (Bauhus et al. 2017; Kambach et al. 2019; Leuschner et al. 2009). These experimental approaches provide a robust framework to test BEF relationships and the mechanisms driving diversity effects, while findings can be particularly relevant for other young planted or seminatural forests (Messier et al. 2022; Depauw et al. 2024; Camarero et al. 2021). We quantified radial growth responses in terms of biomass increment using dendrochronological analysis. We used trait-based models to test whether the drought-induced growth responses were determined by the tree diversity of its neighborhood and the functional identity of the focal tree. We captured the effect of functional identity in terms of drought tolerance represented by the HSM of the focal tree species, and the effect of tree diversity of the neighborhood in terms of tree species richness and functional diversity of HSM. Specifically, we aim to answer the following questions:

- (Q1) Does tree diversity have a consistently positive, negative, or neutral effect on the growth response to a single-year drought across tree diversity experiments in contrasting environmental conditions?
- (Q2) Are tree diversity effects maintained, intensified, or reduced under consecutive drought years compared with the initial drought response?
- (Q3) Does drought tolerance of focal trees modulate the effect of tree diversity on growth responses to single-year droughts and consecutive drought years?

2 | Methods

2.1 | Study Sites and Sample Collection

We studied nine tree diversity experiments across Europe that are part of the global TreeDivNet network of forest biodiversity experiments (<https://treedivnet.ugent.be/>; Verheyen et al. 2016; Paquette et al. 2018). The studied experiments included B-Tree (Austria), BIOTREE-Kaltenborn (Germany), FORBIO-Gedinne, FORBIO-Hechtel-Eksel, FORBIO-Zedelgem (Belgium),

IDENT-Freiburg (Germany), IDENT-Macomer (Italy), ORPHEE (France), and Satakunta (Finland) (Figure 2, Table S1). The experiments cover a wide range of climatic conditions comprising Mediterranean, continental, temperate oceanic, and boreal climates. All experiments use a site-specific pool of tree species adapted to local climate and soil conditions. At each site, all the species were planted in monocultures and in mixtures with varying degrees of species richness in a replicated randomized design that allows separating effects of tree identity from tree diversity on forest functioning and controls for confounding effects of environmental variation (Verheyen et al. 2016; Scherer-Lorenzen et al. 2007). At the time of sampling, all species combinations in all experiments had developed beyond canopy closure at least for several years. The tree age ranged between eight (IDENT-Macomer) and 23 years (Satakunta). Within each experiment, we selected from the site-specific pool a subset of species exhibiting different drought sensitivity and hydraulic strategies and mixture compositions with contrasting functional diversity (Table S2). Within each experiment, each species was sampled in different species compositions including monocultures (1 species), simple mixtures (2 species) and more diverse mixtures (3 to 6 species, depending on the site). For each experiment, 10 individuals per species and composition were selected as focal trees. Each selected composition was represented by two plot replicates per experiment (except BIOTREE-Kaltenborn). Focal trees were selected according to the following criteria: (1) dominant or co-dominant trees within the species cohort to reduce the effect of different light availability on growth; (2) healthy trees with straight single stems to avoid sampling reaction wood; (3) trees in or near the plot center to avoid edge effects; (4) most direct tree neighbors alive to avoid confounding density effects; and (5) direct neighborhood representing the species composition of the plot to maximize interspecific tree-tree interactions. Sampled trees of a given plot and species had comparable sizes. We sampled a total of 1424 focal trees from 21 species (Table S2).

We collected one increment core from each focal tree using a standard Pressler increment borer with an inner core diameter of 5 mm (Haglöf, Sweden). We took samples at a basal coring height of 30 cm to maximize the tree-ring series length. We cored trees primarily from the southern side to avoid potential eccentricity of tree rings from swaying in westerly winds, or perpendicular to the lean direction to avoid sampling reaction wood (Tumajer and Tremel 2019; Visser et al. 2023). We collected all samples at the end of the 2021 growing season (November–December).

2.2 | Drought Selection and Drought-Induced Growth Responses

Droughts were identified as periods of extreme deficit in water availability following a climate-based approach with the use of site-specific data (Schwarz et al. 2020; Slette et al. 2019). We obtained climate data from the ERA5-Land of the Copernicus Climate Data Store (Muñoz-Sabater et al. 2021). We characterized drought conditions considering the Standardized Precipitation Evapotranspiration Index (SPEI) and relative extractable water (REW). First, we calculated SPEI from the local monthly climatic water balance (precipitation minus potential evapotranspiration) over a selected moving time window using the R package SPEI

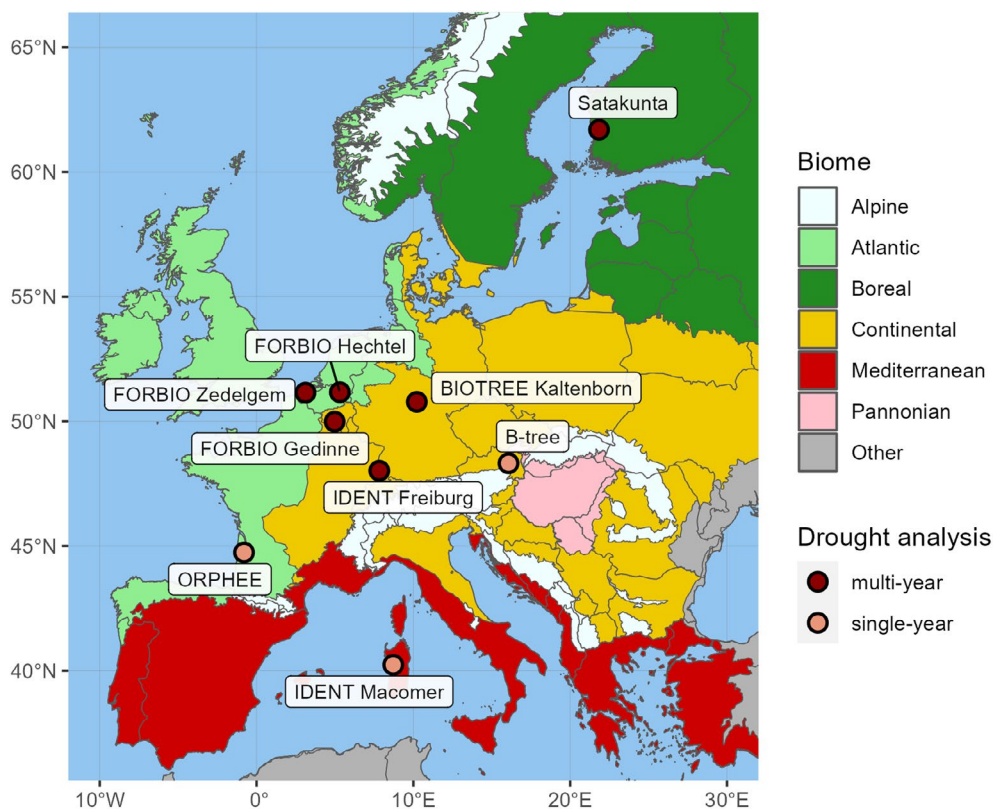


FIGURE 2 | Location of experimental sites. All sites were analyzed for growth responses during a single-year drought (research question Q1) and six sites were analyzed during consecutive drought years (Q2, darker points). The biogeographical region layer is based on Cervellini et al. (2020). Background information on experiments (i.e., planting design, climate, soil characteristics) is detailed in Table S1. A list of mixture compositions considered in the analysis is detailed in Table S2. Map lines delineate study areas and do not necessarily depict accepted national boundaries.

(Vicente-Serrano et al. 2010; Beguería and Vicente-Serrano 2017). We considered “SPEI12 December” for the annual conditions and “SPEI6 April-September” for the growing season. We calculated SPEI over the reference 30-year period (1991–2021) to determine abnormally dry years for each experiment location, using the threshold -1.28 as the 10% quantile of all values following the drought classification of the SPEI global drought monitor (Agnew 2000; Beguería et al. 2022). Then, we calculated the minimum monthly REW during the growing season to characterize the drought intensity in terms of plant drought stress experienced by trees with the plant hydraulics model SurEau (Ruffault et al. 2013, 2022). The model was applied at each site using vegetation parameters specific to one species representative of the biome and the local species pool of each experiment as in Blondeel et al. (2024). Details on the calculation of drought indices are explained in Supplementary Method S1; input variables used in the SurEau simulations are detailed in Table S3. Finally, we estimated drought duration as the number of days with $REW < 0.4$ during the year ($DrDays_{12m}$) and during the growing season ($DrDays_{AprSept}$). The different drought indices showed comparable temporal patterns and high correlation within each site (Figure S1).

Identification of recent drought years focused on the last five years before sample collection. To answer Q1, we focused our analysis on the growth response to the first drought year (hereafter, growth response year 1 or $Resp_yr 1$) in each experiment with severe drought conditions (i.e., $SPEI12$ threshold < -1.28 , ranging from -1.36 to -2.9 across sites). Pre-drought reference year(s) were determined as the closest preceding year (or two years) to the corresponding

first drought characterized by normal or wet climatic conditions (i.e., $SPEI12$ ranging from -0.5 to 0.9 across sites). To answer Q2, growth responses were calculated for six experiments (FORBIO-Gedinne, FORBIO-Hechtel-Eksel, FORBIO-Zedelgem, BIOTREE-Kaltenborn, IDENT-Freiburg, and Satakunta) experiencing a multiyear drought event in 2018–2020. In these experiments, the initial drought year was severely dry ($Resp_yr 1$ with $SPEI12$ ranging from -1.37 to -1.9) and followed by two consecutive years with moderate drought conditions ($Resp_yr 2-3$ with $SPEI12$ ranging from -0.53 to -2.08 across sites). To consider potential drought legacy effects, we included in the analysis the post-drought year 2021 characterized by normal or wet climatic conditions in most sites ($Resp_yr 4$ with $SPEI12$ values ranging from 0.9 to 1.98 , with the exception of Satakunta which experienced moderate drought with a $SPEI12$ value of -0.67). The final selection of study drought years for each site is shown in Table S4 and Figure S5.

2.3 | Radial Growth Measurements

We obtained annual series of tree-ring width (TRW) and mean wood density using X-ray micro-Computed Tomography (μCT) with the HECTOR μCT scanner (Masschaele et al. 2013) at the Ghent University Centre for X-ray tomography (UGCT; <http://www.ugct.ugent.be>). Before scanning, increment cores were dried at room temperature for one month to be in balance with the scanner room environment ($20^{\circ}C$, relative humidity 34%) and mounted in master sample holders for batch scanning. We scanned cores at an approximate voxel pitch resolution of $50\mu m$

following the workflow for μ CT densitometry detailed in de Mil et al. (2016). Reconstructions of the scanned sample batch were performed using the Octopus Reconstruction software (Vlassenbroeck et al. 2007). We extracted the three-dimensional images of each single core sample and converted them to density estimates using specific toolboxes (van den Bulcke et al. 2014; de Mil et al. 2016; de Mil and van den Bulcke 2023). Details of the methodology followed for the reconstruction, extraction, and crossdating of tree-ring series are explained in Supplementary Method S2. Rigorous quality filtering was performed to ensure that annual growth rings were correctly defined, discarding from the analysis those samples with ambiguous tree-ring definitions after the crossdating processing and species with a substantial proportion of doubtful samples at a given site (>40%). See Figure S7 for an overview of the wood anatomy of species. Following sample quality filtering, we analyzed a total of 948 trees from 16 species and 68 different species compositions (26 monocultures, 28 simple mixtures, 14 more diverse mixtures) (Table S2).

We calculated basal area increment (BAI, $\text{mm}^2 \text{ year}^{-1}$) series from pith to bark based on the TRW series using the `bai.in()` function in the `dplR` package in R (Bunn 2008; Bunn et al. 2023). We estimated an indicator for radial biomass increment (hereafter BIOMinc, $\text{kg m}^{-1} \text{ year}^{-1}$) as the product of BAI and mean wood density (kg m^{-3}) of the ring (Figure S10). This indicator at the individual tree level reflects the actual carbon allocation in radial growth better than TRW and BAI metrics (Camarero and de Andrés 2024; Skiadaresis et al. 2025) and it can be considered a proxy of aboveground biomass growth when continuous inventory data in annual tree height growth is missing (Vannoppen et al. 2018; Bontemps et al. 2010). We systematically tested different transformation and detrending options for the growth variables, but all methods resulted in potential removal or overestimation of the drought-induced responses (Supplementary Method S2). Given the challenges to detrend age effect in such short time series, we analyzed further drought-induced growth responses based on raw and undetrended series of the tree-ring variables (Schwarz et al. 2020; Schnabel, Barry, et al. 2024; Skiadaresis et al. 2025). BIOMinc and BAI series were considered as a more robust indicator of temporal trends in radial growth for young trees than TRW (i.e., less influenced by biological age trends) (Biondi and Qeadan 2008). Finally, we quantified the drought-induced growth responses of each individual tree for a given response year as the relative growth index proposed by Lloret et al. (2011) as the ratio:

$$\text{Growth response}_{\text{year } i} = \frac{\text{Growth}_{\text{year } i}}{\text{Average growth}_{\text{PreDr}}}$$

where $\text{Growth}_{\text{year } i}$ is the radial growth (either TRW, BAI or BIOMinc) for the given year i (drought or post-drought year) and $\text{Average growth}_{\text{PreDr}}$ is the mean growth during the corresponding pre-drought reference year(s) for that site (Figure S8).

2.4 | Functional Traits Selection

To determine the functional identity of tree species and functional diversity of neighborhoods, we determined the species'

drought tolerance as the hydraulic safety margin (HSM_{TLP} , MPa) based on both stomatal traits and hydraulic traits to encompass the spectrum of processes involved in drought tolerance but also resource use (Choat et al. 2012; Martin-StPaul et al. 2017). We defined HSM_{TLP} as the extent to which early stomatal closure protects the xylem from dysfunction during drought, calculated as the difference between the turgor loss point (TLP, MPa, a proxy of the stomatal closure point) and the water potential at which 50% of xylem cavitates (P50, unit MPa) ($\text{HSM}_{\text{TLP}} = \text{TLP} - \text{P50}$). This HSM_{TLP} definition has been used to predict the risk of drought-induced tree mortality (Martin-StPaul et al. 2017; Powers et al. 2020) and is linked to stomatal control as TLP correlates with leaf water potential at stomatal closure (Bartlett et al. 2016; Brodribb and Holbrook 2003). HSM_{TLP} , used as a trait characterizing species' drought tolerance, differentiates from the traditional HSM metric (based on minimum water potential, Ψ_{min}), which is considered a measure of drought stress (Choat et al. 2012). We considered species-specific mean trait values from multiple consolidated species-level datasets (see Supplementary Method S3 for the complete list of sources, and Table S6 for the final dataset of species-specific trait values). Additionally, we assessed the relation among these hydraulic traits and additional traits related to the whole-plant economics spectrum (i.e., leaf mass per area, leaf nitrogen concentration, wood density) using pairwise correlations and principal component analysis (PCA) (Supplementary Method S3, Table S6). HSM_{TLP} was associated with other drought-tolerance traits and aligned with the first PCA axis explaining most of the variation across traits (Figures S14 and S15). Finally, we compared the effect of HSM_{TLP} and additional functional traits on the growth responses during a single-year drought with a sensitivity analysis among different linear mixed-effect models as a function of each species-specific trait (Supplementary Method S4, Table S7, Figure S16). Based on this preliminary analysis, HSM_{TLP} was selected as the key physiological trait to quantify effects of the drought tolerance gradient on growth responses.

2.5 | Neighborhood Competition and Tree Diversity

We defined neighborhoods of focal trees as all alive direct (first-order) neighbors and second-order neighbors that had crowns interacting with the focal tree's crown within a certain neighborhood radius. This neighborhood radius was adapted to each site to account for the differences in planting density and design between experiments, that is, radius 2.9 m for most sites with larger planting distance, radius 1.5 m for sites with narrow planting distance (B-Tree, IDENT-Freiburg, IDENT-Macomer) (Figure S6, Table S5). We measured the diameter of each focal and neighbor tree with a digital caliper at 1 mm resolution at the same coring height and direction. For each neighboring tree, we recorded its relative position to the focal tree and species identity. We quantified the competition experienced by focal trees at the time of coring using these measured neighborhood data, except for IDENT-Freiburg and IDENT-Macomer, for which we used inventory data from the same year. The spatial definition of the tree neighborhood around each focal tree was done using the `sf` R package (Pebesma and Bivand 2023). The distance-dependent Hegyi's

index (Hegyi 1974) was calculated as a competition index for each focal tree using the following equation:

$$Hegyi_i = \sum_{j=1}^n \frac{BA_j / BA_i}{d_{ij}}$$

where BA_i and BA_j are the basal area of the focal tree i and each tree neighbor j , respectively, and d_{ij} is the distance between each tree neighbor and the focal tree, considering all n neighbor trees (from all species) within the given focal tree's neighborhood. Alternative competition indices based on height were not considered as height data was not available for all neighborhood trees.

Neighborhood tree diversity was considered as the realized neighborhood species richness (nSR) and the functional diversity of HSM_{TLP} (FD_{HSM}). FD_{HSM} for each focal tree's neighborhood (community) was calculated as the abundance-weighted functional dispersion as described by Laliberté and Legendre (2010) using the FD R package (Laliberté et al. 2014):

$$FD_{HSM} = \frac{\sum_{k=1}^n BA_k d_k}{\sum_{k=1}^n d_k}$$

where BA_k is the relative abundance of species k in a neighborhood with n species, calculated as the cumulative basal area, and d_k is the distance in the traits space of species k to the weighted centroid of the neighborhood community. Functional dispersion measures the mean abundance-weighted distance of species along the corresponding trait gradient and represents the complementarity in functional strategies of co-occurring species within each neighborhood community (Laliberté and Legendre 2010).

2.6 | Statistical Analysis

To answer research questions Q1 and Q3 in relation to the single-year drought response across all sites, we used linear mixed-effect models (LMMs) of the drought-induced growth responses during the first drought year to test the direct effect of neighborhood tree diversity (Q1) and its interaction with drought tolerance (HSM_{TLP}) of the focal-tree species ($tree\ diversity \times HSM_{TLP}$, Q3). We tested the effects of neighborhood tree diversity in separate models for the moderators nSR (m1a) and FD_{HSM} (m1b) using the same basic model structure. To account for the experimental design and differences between sites, we used a nested group-level (random) effect structure of plot nested within site. We also tested for extended versions of the model, by considering the three-way interaction effects of tree diversity, drought tolerance, and the following predictors: neighborhood competition ($tree\ diversity \times HSM_{TLP} \times Hegyi$), tree basal area ($tree\ diversity \times HSM_{TLP} \times BA$), drought intensity in terms of SPEI12 ($tree\ diversity \times HSM_{TLP} \times SPEI12$), drought intensity in terms of SPEI6sept ($tree\ diversity \times HSM_{TLP} \times SPEI6sept$), drought intensity in terms of minimum monthly REW during the growing season ($tree\ diversity \times HSM_{TLP} \times REW$), drought duration as drought days during the year ($tree\ diversity \times HSM_{TLP} \times DrDays_{12m}$), and drought days during the growing season ($tree\ diversity \times HSM_{TLP} \times DrDays_{AprSep}$). Additionally, all versions of the model controlled for the fixed effects of tree age and drought

conditions during the year preceding drought (in terms of SPEI, REW or drought duration depending on the corresponding model).

To answer Q2 and Q3 regarding consecutive drought years, we used site-specific models to analyze growth responses considering the subset of six experiments that experienced a multi-year drought event. These models evaluated drought-induced growth responses across consecutive years as a function of all two-way interactions between the response year, HSM_{TLP} of the focal-tree species, and the neighborhood tree diversity. Analyzing Q2 was based on the interaction $tree\ diversity \times Resp_yr$, whereas analyzing Q3 was based on the interactions $HSM_{TLP} \times tree\ diversity$ and $HSM_{TLP} \times Resp_yr$. We tested the effects of neighborhood tree diversity in separate models for the moderators nSR (m2a) and FD_{HSM} (m2b) using the same basic model structure. We accounted for non-linear drought responses across consecutive years, including $Resp_yr$ as a categorical fixed effect ($Resp_yr$ 1, 2 and 3 for the consecutive drought years, $Resp_yr$ 4 for the post-drought year). Models to address Q2 were fitted considering a mean intercept of 0 to compare growth responses across consecutive years relative to the pre-drought reference growth for the comparison of relative effects across site-specific models. Here, we did not consider drought intensity (i.e., SPEI) as a fixed effect since it would confound the fixed effect of the consecutive $Resp_yr$. We used tree individual as a random intercept effect to account for repeated observations per tree across response years.

All models addressing Q1 and Q2 used a log transformation of the response variables to meet model assumptions (normality and heteroscedasticity). All models controlled for fixed effects of tree basal area (scaled to account for relative intraspecific differences in tree size within each site and species) and competition (standardized to account for relative interspecific competition within each site). Standardization of model predictors (to meet model assumptions and have comparable effect sizes across sites) and testing of alternative random structures are detailed in Supplementary Method S5. We compared the model performance and parsimony of fixed effects among the separate models based on the Akaike Information Criterion (AIC). The presentation of model results focuses on growth responses in terms of BIOMinc, which had consistently lower AIC and were less affected by tree age than BAI-based models (Table S8). All analyses were computed using R version 4.3.1 (R Core Team 2023). All models were fitted using the lme4 package (Bates et al. 2015) with restricted maximum likelihood estimation (REML). Model statistics and marginal effects were visualized using the sjPlot package (Lüdtke et al. 2024).

3 | Results

3.1 | Growth Responses During a Single-Year Drought

We observed substantial variability in growth responses within each site, indicating that not all trees reduced growth during a single extreme drought year compared to pre-drought conditions (Figure 3, Figure S11). Models showed that drought-induced

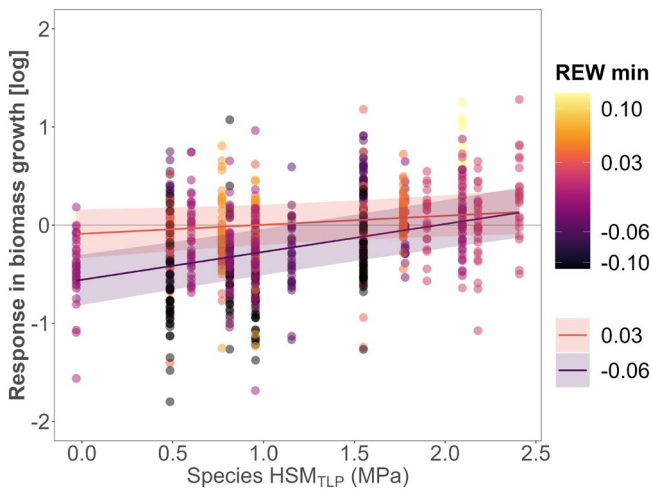


FIGURE 3 | Growth response during a single-year drought and marginal effects of the hydraulic safety margin (HSM_{TLP}) of the focal-tree species and the drought intensity (REW min, minimum monthly relative extractable water during growing season). Higher HSM_{TLP} (based on turgor loss point) indicate species with higher drought tolerance. Points represent tree growth responses (log-transformed) in terms of radial biomass increment during the single-year drought relative to the pre-drought reference year, with values below the horizontal line $y=0$ representing trees with relative growth reductions. Point colors represent the gradient of site-specific drought intensity, with darker points representing higher drought intensity (lower REW). Drought stress threshold is considered at $REW=0.4$ and wilting point at $REW=0$. Lines represent the marginal effects of the linear mixed-effect model fitted to REW corresponding to 1st (-0.06) and 3rd quartile values (0.03) of REW experienced among all samples and sites; bands show a 95% confidence. See Table S10 for details of the fitted model. See Figure S12 for the details of the HSM_{TLP} ranges of focal species per site. See Figure S4 for details of the REW range per site.

growth responses during a single-year drought were significantly influenced by the focal species HSM_{TLP} ($p < 0.001$) (Figure 3, Table S10). Overall, species with high HSM_{TLP} had less growth reduction compared to species with lower HSM_{TLP} . The positive HSM_{TLP} effect was modulated by drought intensity ($HSM_{TLP} \times REW$, $p < 0.01$), although this modulation was only significant when using REW, not SPEI indices (Table S10). Reduction in growth in low- HSM_{TLP} species was more pronounced at sites experiencing the most extreme drought intensity ($REW=0$), where differences between species with contrasting HSM_{TLP} were higher. Drought-tolerant species showed similar growth responses at sites with less extreme drought conditions ($REW=0.03$), where differences with low- HSM_{TLP} species were less pronounced.

The model considering the 3-way interaction between $FD_{HSM} \times HSM_{TLP} \times REW$ was the most parsimonious (lowest AIC) and with high explanatory power (conditional $R^2=0.54$, marginal R^2 of fixed effects= 0.32). Overall, models considering drought intensity showed a neutral direct effect of neighborhood tree diversity on growth responses during a single-year drought, either in terms of nSR (Figure 4a) or FD_{HSM} (Figure 4b). Additionally, there was no significant interaction effect between tree diversity and drought intensity, whether in terms of REW or SPEI indices (Table S10). Likewise, no interaction was found between

tree diversity and HSM_{TLP} , as species with contrasting HSM_{TLP} responded similarly to increasing tree diversity. Conversely, the model considering the 3-way interaction between $FD_{HSM} \times HSM_{TLP} \times DrDays_{AprSep}$, though less parsimonious and with lower explanatory power (conditional $R^2=0.48$, marginal $R^2=0.26$), revealed a significant interaction effect between tree diversity and drought duration ($p < 0.01$) (Table S11). Specifically, an increase in drought duration during the growing season from 75 to 91 days (corresponding to the 10% and 90% quantiles across samples and sites) shifted tree diversity effects from positive to negative (Figure 4c).

Single-year drought responses were not influenced by relative neighborhood competition, either directly or in interaction with HSM_{TLP} and tree diversity ($tree\ diversity \times HSM_{TLP} \times Hegyi$) (Tables S9 and S10). In contrast, all models showed a positive direct effect of tree size (relative intraspecific differences) on the drought response ($p < 0.01$), although tree size did not modulate the interaction with HSM_{TLP} or tree diversity (Tables S9–S11). Within each species, trees with larger BA consistently had more positive drought responses. Tree age and preceding drought conditions had no significant effect in the BIOMinc growth responses of the models based on REW or $DrDays_{AprSep}$ whose marginal effects are displayed here (Tables S9–S11).

3.2 | Growth Responses During Consecutive Drought Years

In site-specific models of multiyear drought events, we observed that the effects of neighborhood tree diversity on growth responses strengthened over consecutive drought years at most sites (Figure 5). While diversity effects during the initial severe drought year were insignificant for all sites (model estimate for the *tree diversity* predictor corresponding to *Resp_yr 1*), significant diversity effects emerged during subsequent drought years and the post-drought year (interaction $tree\ diversity \times Resp_yr$) (Tables S12 and S13). The direction and magnitude of diversity effects on growth responses over consecutive drought years varied by site. A positive diversity effect was evident only at IDENT-Freiburg ($p < 0.001$), where higher diversity increased relative growth during the following consecutive drought years (*Resp_yr 2–3*) and post-drought (*Resp_yr 4*). In contrast, a negative effect of functional diversity was evident during the third drought year (*Resp_yr 3*) at FORBIO-Zedelgem ($p < 0.001$) and Satakunta ($p < 0.01$), intensifying even under favorable conditions in the post-drought year at these sites ($p < 0.001$) and at BIOTREE-Kaltenborn ($p < 0.01$). A neutral effect of neighborhood tree diversity across consecutive years was found at FORBIO-Gedinne and FORBIO-Hechtel-Eksel. At all sites, tree diversity increased growth response variability across consecutive years, as indicated by the increased confidence interval of the interaction $tree\ diversity \times Resp_yr$ (Figure 5). Models based on FD_{HSM} were more parsimonious (lower AIC) and had a higher proportion of variance explained (marginal R^2 ranging between 0.05 for Satakunta and 0.38 for IDENT-Freiburg) than models based on species richness (Tables S12 and S13).

Regarding the drought tolerance traits, no models showed significant interaction between tree diversity (nSR, FD_{HSM}) and

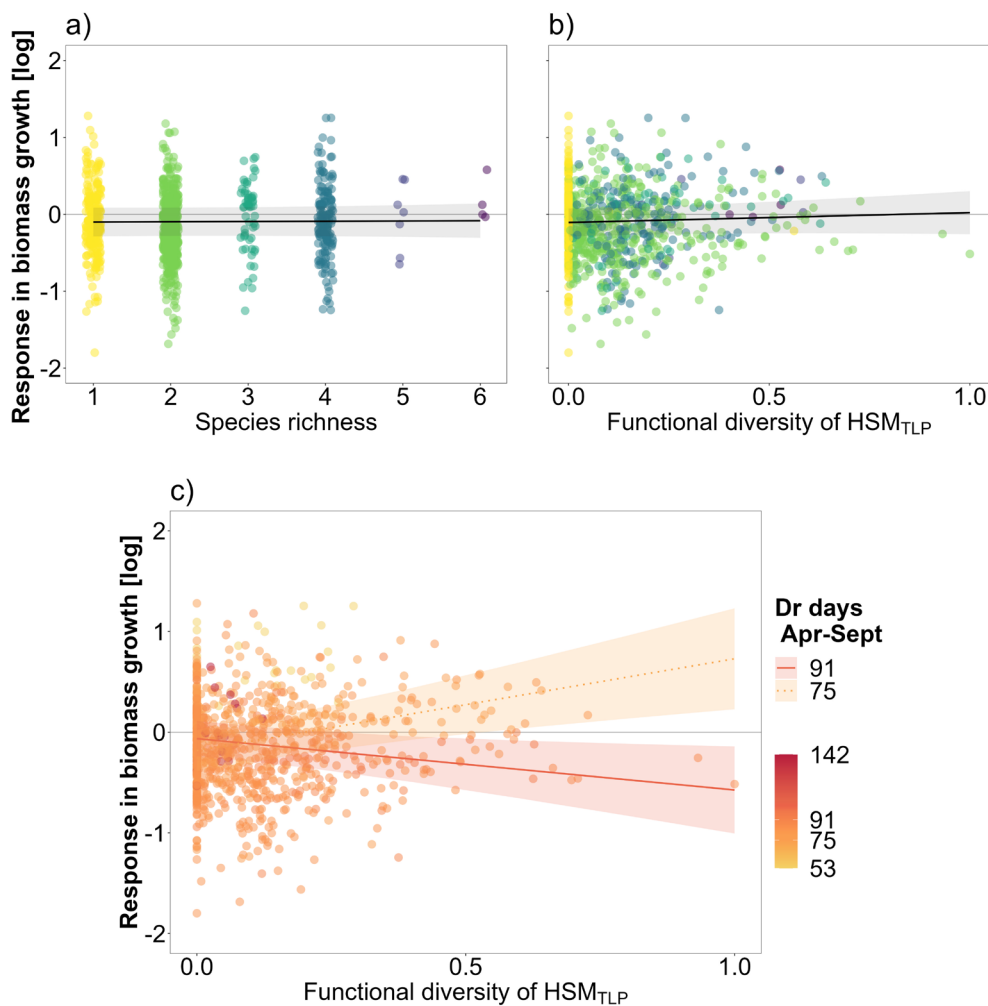


FIGURE 4 | Growth response during the single-year drought and marginal effects of neighborhood tree species richness (a) and functional diversity (b, c) in terms of hydraulic safety margin (FD_{HSM}). Figures show the overall tree diversity effects (a, b) and the interactive effect with drought duration ($DrDays_{AprSept}$, number of days during the growing season with $REW < 0.4$). Points represent the tree growth responses (log-transformed) in terms of radial biomass increment during the single-year drought relative to the pre-drought reference year, with values below the horizontal line $y=0$ representing trees with relative growth reductions. Points are colored according to the neighborhood species richness depicted in figure a. Lines represent the marginal effects fits of the linear mixed-effect model, and bands show a 95% confidence. Marginal effect slopes in figures a and b are not significantly different from zero. Marginal effects in figure c indicate 75 and 91 drought days, corresponding to the 10%–90% quartile values of $DrDays_{AprSept}$ experienced among all samples and sites (Figure S4). FD_{HSM} was standardized (via min-max normalization) across all sites to account for absolute differences between sites (Figure S18). See Table S10 for details of the fitted model.

HSM_{TLP} , indicating that species with contrasting HSM_{TLP} were not affected differently by increased diversity. However, the effect of HSM_{TLP} on growth responses varied depending on the site (Figure 6, Tables S12 and S13). A positive HSM_{TLP} effect across response years was only moderately evident at FORBIO-Zedelgem ($p < 0.05$), while most sites show no significant effect during the first drought year (unlike in the Q1 model). Nevertheless, drought-tolerant species with higher HSM_{TLP} generally showed improved growth in the post-drought year ($Resp_{yr 4}$) at FORBIO-Gedinne, FORBIO-Hechtel-Eksel ($p < 0.001$), IDENT-Freiburg, and Satakunta ($p < 0.01$). Conversely, at BIOTREE-Kaltenborn, drought-tolerant species had lower relative growth during the consecutive drought and post-drought years ($Resp_{yr 2-4}$) compared to species with lower HSM_{TLP} ($p < 0.001$).

4 | Discussion

4.1 | Tree Diversity Effects on Growth Responses Are Strengthened Over Prolonged Drought Events

We found that increasing neighborhood tree diversity, whether quantified through species richness or hydraulic trait diversity, had an overall neutral effect on the growth responses during a severe single-year drought across sites (Q1, Figure 4a,b). This partially aligns with studies reporting mixed or neutral tree diversity effects during mild droughts, though some studies show that tree diversity effects can turn negative during severe droughts (Haberstroh and Werner 2022; Grossiord, Granier, Ratcliffe, et al. 2014). However, we did not observe any significant interaction between tree diversity and drought intensity in

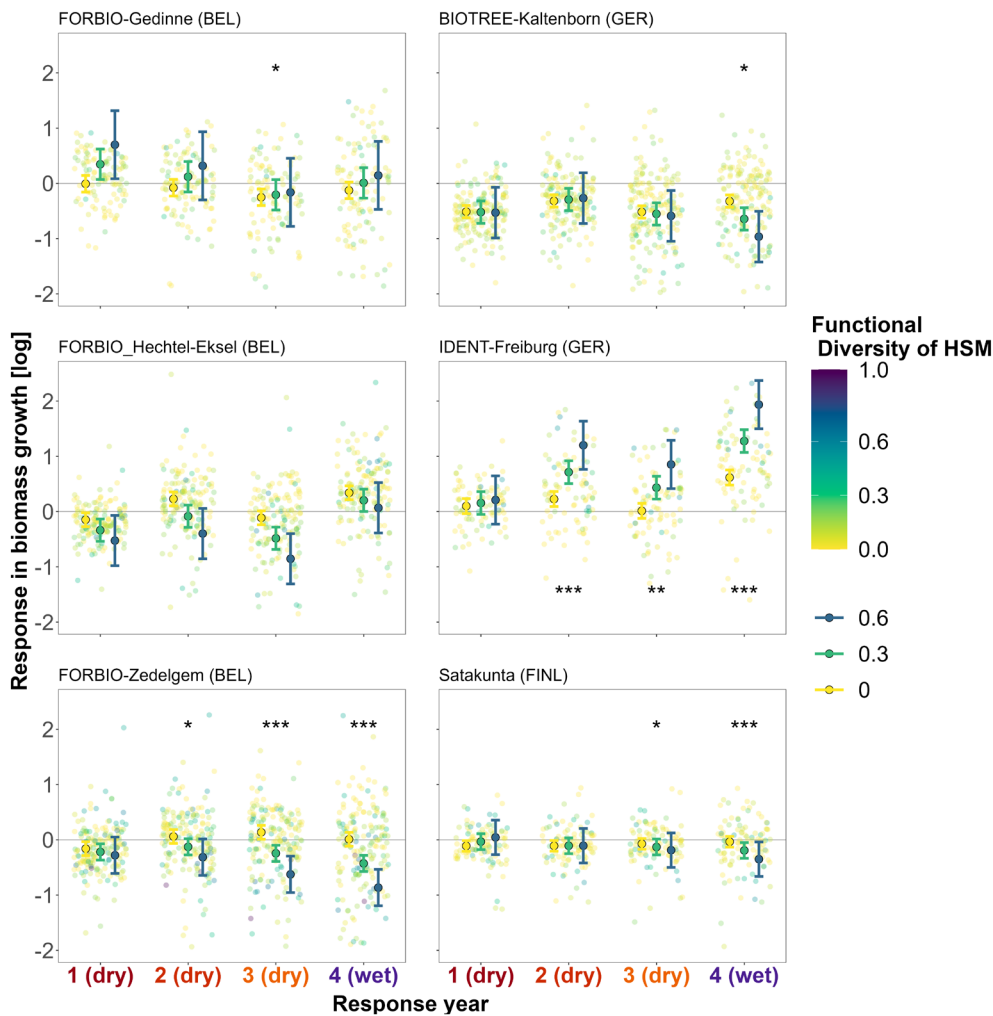


FIGURE 5 | Marginal effect of neighborhood hydraulic diversity (FD_{HSM}) on growth responses during three consecutive drought years (Resp_yr 1–3) and a post-drought year (Resp_yr 4) for each site-specific model. Background points represent tree growth responses (log-transformed) in terms of radial biomass increment, with values below the horizontal line $y=0$ indicating trees that experienced growth reductions relative to pre-drought reference levels. Color legend represents neighborhood functional diversity in terms of hydraulic safety margin, standardized (via min-max normalization) across all sites to account for absolute differences. Marginal effects are visualized for monocultures (yellow, $FD_{HSM}=0$) to intermediate- (green, $FD_{HSM}=0.3$) and higher functional diversity (blue, $FD_{HSM}=0.6$). Points with error bars represent the marginal effect fits with 95% confidence interval for the interaction $FD_{HSM} \times Resp_yr$, while holding other predictors constant. Significant symbols represent significant fixed effects for the interaction $FD_{HSM} \times Resp_yr$, with significance levels $*p < 0.05$, $**p < 0.01$, $***p < 0.001$. See Table S13 for details on the fitted models. See Figure S18 for details on FD_{HSM} trait ranges per site.

radial growth responses during the first drought year. This may be due to the limited range in drought intensity for the studied single-year droughts, with conditions near the wilting point across sites (Figure S4). While physiological processes such as stomatal regulation and xylem hydraulic integrity are strongly affected by drought intensity—evidenced by the significant interaction between REW and HSM (Figure 3)—these drought intensity effects may not always translate into radial growth during a single-year drought (Jucker et al. 2017; Schnabel et al. 2022). Radial growth can remain stable if trees mobilize carbon reserves from previous years to sustain growth under initial drought conditions (Cailleret et al. 2017; Körner 2019; McDowell et al. 2022). However, our study data cannot ascertain whether these mechanisms played a role.

In contrast to drought intensity, we found that drought duration influenced tree diversity effects on growth responses.

Under increased drought duration during a single growing season, tree diversity effects shifted from positive to negative (Figure 4c), supporting the proposed pathway where functional diversity exacerbates drought impacts under prolonged drought (Figure 1b). These results align with studies reporting decreased or even a shift toward negative diversity effects under increased drought intensity and duration (Haberstroh and Werner 2022; Aldea et al. 2022; Shovon et al. 2024). Our findings are also consistent with studies showing that drought duration, rather than intensity alone, strongly influences radial growth (Ruffault et al. 2013; D'Orangeville et al. 2018; Huang et al. 2018; Lv et al. 2022) and drives differential growth responses across species and mixture compositions (Aldea et al. 2022). Multiple dimensions of drought—including frequency, duration, and onset during the growing season—can lead to different growth responses even when total drought intensity and water deficits are similar (Gao

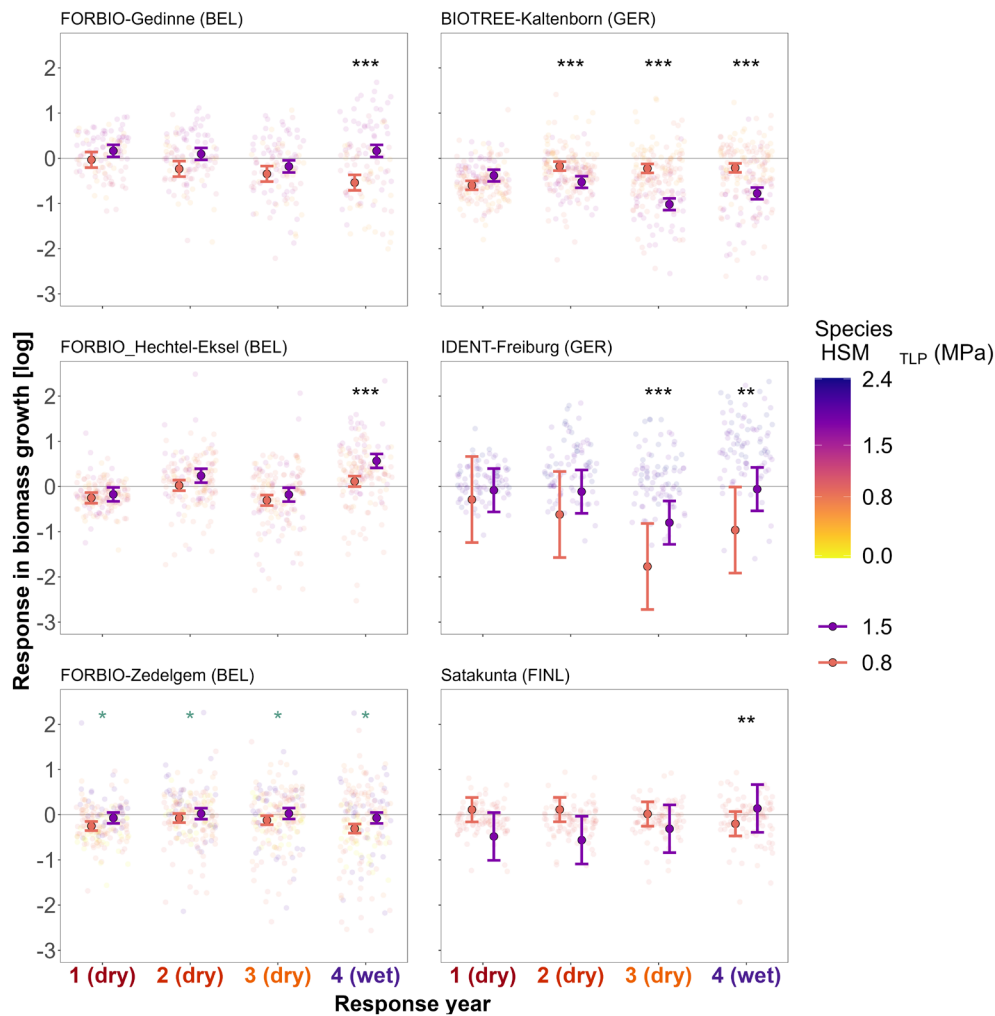


FIGURE 6 | Marginal effect of hydraulic safety margin (HSM_{TLP}) of focal-tree species on growth responses during three consecutive drought years (Resp_yr 1–3) and a post-drought year (Resp_yr 4) for each site-specific model. Background points represent tree growth responses (log-transformed) in terms of radial biomass increment, with values below the horizontal line $y=0$ representing trees that experienced growth reductions relative to pre-drought reference levels. Color legend represents the species-specific HSM_{TLP} (based on turgor loss point). Points with error bars represent the marginal effect fits with 95% confidence interval for the interaction $HSM_{TLP} \times Resp_yr$ while holding other predictors constant. Significant symbols represent significant fixed effects for the interaction $HSM_{TLP} \times Resp_yr$, with significance levels $*p < 0.05$, $**p < 0.01$, $***p < 0.001$. See Table S13 for details of the fitted models. Marginal effects are visualized for the same HSM_{TLP} values for comparison across sites, considering one species with relatively low drought tolerance (orange, $HSM_{TLP} = 0.8$) and one with high drought tolerance (violet, $HSM_{TLP} = 1.5$) corresponding to the 1st and 3rd quartile values of HSM_{TLP} across all analyzed species and sites. Note that some sites (IDENT-Freiburg, Satakunta) had a species pool with more limited range of HSM_{TLP} values, resulting in wider confidence intervals. See Figure S12 for details on HSM_{TLP} ranges of focal trees per site.

et al. 2018; Anderegg et al. 2013). The number of drought days can determine the growth period and annual radial growth (Etzold et al. 2022). For a given drought duration, the impact on growth also depends on drought timing within the growing period with respect to the growth phenology of the species (Gao et al. 2018; van Kampen et al. 2022). Since xylem formation (i.e., xylogenesis) is closely linked to the length of the growth period, drought duration may serve as a better predictor of radial growth responses than drought intensity alone (Lempereur et al. 2015; de Micco et al. 2019).

While diversity effects during the first drought year depended on the drought duration across sites, tree diversity effects on site-specific growth responses also strengthened during consecutive drought years and persisted into the post-drought year (Q2, Figure 5). Interestingly, the direction of this effect varied

across sites: three sites showed increasingly negative diversity effects, two showed neutral effects, and one showed a positive effect. Tree diversity effects differed even when comparing the three FORBIO experiments with similar ages planted following a similar design at relatively close conditions. This corroborates the contrasting and site-specific diversity effects reported in earlier studies (Ratcliffe et al. 2017; Forrester et al. 2016; Grossiord 2019). Notably, our study is unique in showing different response patterns across multiple experimental sites with manipulated gradients of tree species richness. The observed strengthening of tree diversity effects during consecutive years could indicate an intensification of tree-tree interactions under prolonged drought stress (Forrester et al. 2016; Soliveres et al. 2015; Maestre et al. 2009) or a delayed signal of diversity effects on tree rings due to drought legacy mechanisms (Anderegg et al. 2015; Vilonen et al. 2022; Bastos et al. 2020).

While the observed site-specific diversity effects during multiyear drought supported both proposed theoretical pathways, the underlying mechanisms driving these effects may be highly context-dependent. Positive effects in the IDENT-Freiburg experiment align with the pathway where functional diversity increasingly buffers drought stress during consecutive drought years (Figure 1a). However, we only analyzed species with comparably high HSM within this experiment (Figure 6). In a previous study at this experiment assessing only the initial drought year considered in our study, Hajek et al. (2022) found that species with higher HSM suffered less and tended to decrease the survival probability of their neighbors with low HSM, and vice versa. This suggests that the positive effects observed here may result from selection effects leading to a competitive release of drought-tolerant species, which profit from mortality suffered by drought-sensitive species (Grossiord 2019; Forrester and Bauhus 2016). Segregation of tree communities into “winner” and “loser” species in terms of diversity was also found in another tree diversity experiment under the same 2018–2020 drought (Sachsenmaier et al. 2024). As drought-sensitive species decline under intensifying water competition, positive diversity effects may increase for drought-tolerant species under prolonged drought stress (Maestre et al. 2009). However, tree diversity effects on mortality can vary widely depending on the context (Urigoiti et al. 2023; Searle et al. 2022). Tree mortality is both shaped by tree diversity and specific drought resilience (Grossiord 2019; DeSoto et al. 2020; Bauhus et al. 2017), while also influencing species interactions and tree drought responses (Guillemot and Martin-StPaul 2024; Plaga et al. 2024). Further analysis distinguishing between pre-drought density-dependent mortality from self-thinning and additional drought-induced mortality is needed to link tree growth responses, mortality, and tree diversity effects.

Conversely, negative diversity effects on growth observed in three sites support the pathway that prolonged drought stress can intensify with increasing functional diversity (Figure 1b). Increased stress may result from greater water consumption in mixed-species stands compared to monocultures due to complementary resource-use strategies (Haberstroh and Werner 2022), early overyielding of tree biomass under favorable conditions (Jump et al. 2017; Jacobs et al. 2021), or pre-drought selection effect favoring species with high water demands (Grossiord 2019; Forrester and Bauhus 2016). In the FORBIO-Zedelgem experiment, complementarity and selection effects were reported to drive early growth overyielding, enhancing canopy packing and stand transpiration (van de Peer et al. 2018; Wang et al. 2024). This positive diversity effect under favorable conditions could have negative impacts under increasing drought stress, when microclimate offsets from tree mixing might be insufficient to counteract drought stress (Zhang et al. 2022). In the Satakunta experiment, tree diversity did not enhance aboveground productivity or transpiration under non-limiting water availability (Grossiord et al. 2013). However, boreal forests with similar tree diversity showed higher water use efficiency and stomatal regulation than monocultures under drier conditions, indicating that species interactions can reduce soil moisture (Grossiord, Granier, Gessler, et al. 2014). While complementarity in stomatal regulation, belowground complementarity, and water redistribution can mitigate drought impact to some extent

(Bello et al. 2019; Moreno et al. 2024), these mechanisms may be overridden under severe or prolonged droughts (Grossiord et al. 2019; Mas, Vilagrosa, et al. 2024). Ultimately, determining the specific mechanisms driving the context-dependent diversity effects on water availability and drought responses requires the integration of multiple trait-based approaches (Forrester and Pretzsch 2015; Grossiord 2019; McDowell et al. 2022). To achieve this, dendroecological metrics as used in this research should be combined with a broader array of traits associated with drought-induced responses, including isotopic composition (e.g., $\delta^{18}\text{O}$ and $\delta^2\text{H}$) of tree rings and belowground traits that provide insights into water source partitioning (Zapater et al. 2011; Bello et al. 2019; Lehmann et al. 2021; Mas, Vilagrosa, et al. 2024; Vitali et al. 2024).

4.2 | Hydraulic Trait Identity Determines Growth Responses to Drought

HSM_{TLP} of focal species did not influence how tree diversity affected the growth responses during either a single-year drought or consecutive droughts (Q3). Species with contrasting HSM_{TLP} showed similar responses to increased tree diversity (Table S10), differing from studies suggesting that drought-vulnerable species benefit more from higher species richness (Fichtner et al. 2020; Schnabel, Barry, et al. 2024; Sachsenmaier et al. 2024). However, species with high HSM_{TLP} maintained stable growth during a single-year drought, while lower-HSM_{TLP} species showed significant reductions independently of tree diversity (Figure 3). These differences were amplified under extreme drought, which suggests that xylem integrity under severe drought allows enhanced functioning and biomass growth (Choat et al. 2012; Martin-StPaul et al. 2017; Sanchez-Martinez et al. 2023; Anderegg et al. 2016). Notably, the significant interaction between drought intensity and HSM_{TLP} was evident only when using REW as a measure of water availability, emphasizing the importance of quantifying local soil water conditions for assessing tree drought stress over standardized climatic indices like SPEI (Zang et al. 2020; Schwarz et al. 2020).

Across consecutive drought years (Figure 6), most sites showed improved relative growth in the post-drought year for species with high HSM_{TLP}, suggesting lower legacy effects for these drought-tolerant species (Anderegg et al. 2015). In contrast, at BIOTREE-Kaltenborn, drought-intolerant species had lower legacy effects compared to the species with higher HSM_{TLP}, which showed higher growth reductions during consecutive drought and post-drought years. However, these contrasting HSM_{TLP} effects should be interpreted cautiously, given the different HSM_{TLP} ranges between sites and the limited number of species analyzed per site. Additionally, species-specific mean trait values were collected from published databases, lacking site-specific data on trait variability. Intraspecific trait variability at the individual tree level can exceed interspecific differences (Anderegg 2015; Pritzkow et al. 2020). Trait plasticity can be driven by interspecific interactions even in early tree development stages, in turn influencing stand productivity and drought responses (Serrano-León et al. 2022; Benavides et al. 2019; Gazol et al. 2023). To date, the only study on tree diversity effects on intra-species HSM_{TLP} variability found that HSM_{TLP} in a subset of the experiments studied here is primarily driven by species

identity and not by tree diversity, though some significant diversity effects were found for a limited number of species compositions (Decarsin et al. 2024). The discrepancy in HSM_{TLP} effect across our sites aligns with findings that hydraulic traits do not always explain the magnitude of growth declines under intense, prolonged droughts (Song, Poorter, et al. 2022; Smith-Martin et al. 2023).

4.3 | Applicability of Results

Estimating radial biomass growth responses derived from wood density profiles was less affected by tree age than BAI and provided a more accurate indicator of carbon allocation in annual rings across different species (Toïgo et al. 2015; Björklund et al. 2019; Dietrich et al. 2024). This approach, facilitated by recent advances in X-ray imaging and computed tomography (de Mil et al. 2016; van den Bulcke et al. 2019), enabled a deeper understanding of the interactions between tree diversity and drought-induced effects on carbon sequestration. Although radial growth trends and relative drought-induced responses can be influenced by tree age, our analysis approach allowed us to test tree diversity effects while minimizing the tree age effect by comparing monocultures and mixtures of increasing functional diversity levels within the same site and for the same tree age. However, a common limitation in dendrochronological studies like ours is the sampling bias toward canopy-dominant trees, aimed at reducing canopy shading effects on growth responses (Kannenbergh et al. 2020; Duchesne et al. 2019). Although previous research shows that growth responses to short-term climate variability and drought legacy effects may not differ largely depending on the sampling approach (Nehrbass-Ahles et al. 2014; Kannenberg, Novick, et al. 2019), drought responses can differ between dominant and suppressed trees (Grote et al. 2016). Larger trees can be less sensitive to competition for water and exhibit adaptations like greater water uptake, storage capacity, and more efficient water use and transport (Fernández-de-Uña et al. 2023; Colangelo et al. 2017). Our findings show that relative tree size within species has a positive effect on growth responses, while neighborhood competition had no significant impact. This aligns with reports that drought responses are more influenced by tree size, species identity, and drought characteristics than by competition (Gillerot et al. 2021; Castagneri et al. 2022; Del Campo et al. 2022). We did not observe that tree size nor neighborhood competition affected the interaction between tree diversity and hydraulic traits, but it should be noted that our sampling strategy focused on dominant and co-dominant trees may not have captured a sufficiently wide range in tree sizes to elucidate such an effect. Disentangling the effects of tree size and competition is not straightforward, as relative tree size also reflects past competition. No comprehensive study has yet analyzed these factors across a tree diversity gradient including small and mid-sized trees of all species across varying levels of competition. Moreover, we assessed neighborhood competition only in terms of the distance-dependent Hegyi index based on basal area measured at the time of sampling. Further analysis should include alternative indices based on height measurements and crown variables to better characterize neighborhood structural diversity and its influence on drought-induced responses (Forrester 2019; Guillemot and Martin-StPaul 2024). Hence, the influence of neighborhood competition

and structural diversity on tree diversity effects under drought remains unclear.

By using planted experiments with manipulated tree species richness, we minimized confounding effects of environmental heterogeneity within each site, which often obscure diversity effects in observational studies (Scherer-Lorenzen et al. 2007; Bauhus et al. 2017; Pardos et al. 2021). However, observed effects in young tree diversity experiments may differ from those in mature seminatural forests, where drought responses can be influenced by tree age distributions and the development of inter-specific interactions through succession (Kambach et al. 2019; Leuschner et al. 2009). Hence, our findings are particularly relevant for young planted or seminatural forests (Messier et al. 2022; Depauw et al. 2024; Camarero et al. 2021). Several studies have shown that species interactions and the strength of diversity effects on BEF functioning can vary throughout forest development (Cardinale et al. 2007; Jucker et al. 2020; Taylor et al. 2020; Shovon et al. 2024). Differential species-specific growth and mortality rates can alter species dominance and modify competitive interactions for water in mixed stands, thereby reshaping BEF relationships over time (Del Río et al. 2014; Forrester 2014; Guerrero-Ramírez et al. 2017). These temporal changes are further modulated by feedback loops between diversity gradients, tree survival, stand structure, and ecosystem functioning, highlighting the inherent complexity of BEF dynamics (Guillemot and Martin-StPaul 2024; Liu et al. 2022; Mahecha et al. 2024). Consequently, diversity effects at a single point in time may not reflect how BEF relationships evolve as stands mature (Forrester 2014, 2017). As species interactions can be strengthened or shifted over time (Guerrero-Ramírez et al. 2017; Jucker et al. 2017), continued monitoring of these tree diversity experiments will help bridge the gap between observational studies and experimental findings.

Our findings underscore the importance of examining tree responses over extended periods to understand the effects of diversity on tree responses to drought. However, since we only assessed one post-drought year, we cannot draw robust conclusions about the recovery and resilience after these drought years, as drought legacy effects can persist for several years. Nonetheless, our results suggest that conclusions based on single-year drought responses may not hold under accelerated global warming, where prolonged drought events are increasingly followed by only brief recovery periods. As climate change leads to more frequent droughts, acclimation to chronic drought stress may become more crucial than recovery from isolated events (de Boeck et al. 2017). However, the underlying processes remain unclear. Slow recovery might reflect controlled acclimation to optimize long-term survival (Gessler et al. 2020) or a gradual growth decline inducing tree mortality (DeSoto et al. 2020; Cailleret et al. 2017). Understanding the long-term impacts of consecutive droughts on forest ecosystems and the role of tree diversity to mitigate chronic stress is crucial as these events become more frequent.

5 | Conclusion

Our study is the first to examine the role of tree diversity and functional trait identity on tree growth responses across multiple

experimental sites during unprecedented, multiyear droughts. We demonstrated that tree diversity effects on growth responses can intensify over consecutive drought years, with contrasting diversity effects varying from neutral to positive or even negative effects depending on the site. The context dependency of these diversity effects underlines the importance of considering multiple sites and neighborhood scale processes in understanding how interspecific interactions shape tree growth responses under prolonged drought. Hydraulic traits played a significant role in determining drought-induced growth responses, emphasizing the need for trait-based approaches to assess drought impacts on forest ecosystems. Ultimately, integrating process-based models and hydraulic traits could provide forest managers with evidence-based guidelines to design more resilient, mixed-species plantations. By selecting species mixtures that are better adapted to local conditions and incorporating knowledge of hydraulic traits, drought-resilient mixed plantations can be used to enhance ecosystem resilience in the face of unprecedented droughts.

Author Contributions

Hernán Serrano-León: conceptualization, data curation, formal analysis, investigation, methodology, project administration, supervision, visualization, writing – original draft, writing – review and editing. **Haben Blondeel:** conceptualization, data curation, formal analysis, investigation, methodology, project administration, visualization, writing – review and editing. **Paula Glenz:** data curation, investigation. **Johannes Steurer:** data curation, investigation. **Florian Schnabel:** conceptualization, methodology, supervision, writing – review and editing. **Lander Baeten:** conceptualization, funding acquisition, investigation, project administration, writing – review and editing. **Joannès Guillemot:** conceptualization, funding acquisition, investigation, project administration, writing – review and editing. **Nicolas Martin-StPaul:** conceptualization, investigation. **Georgios Skiadaresis:** conceptualization, writing – review and editing. **Michael Scherer-Lorenzen:** conceptualization, funding acquisition, methodology, project administration, supervision, writing – review and editing. **Damien Bonal:** conceptualization, writing – review and editing. **Matthieu Boone:** methodology, software, writing – review and editing. **Renaud Decarsin:** investigation. **Arsène Druel:** methodology, writing – review and editing. **Douglas L. Godbold:** methodology. **Jialiang Gong:** visualization. **Peter Hajek:** methodology, writing – review and editing. **Hervé Jactel:** methodology, writing – review and editing. **Julia Koricheva:** methodology, writing – review and editing. **Simone Mereu:** methodology. **Quentin Ponette:** methodology, writing – review and editing. **Boris Rewald:** methodology, writing – review and editing. **Hans Sandén:** methodology, writing – review and editing. **Jan Van den Bulcke:** data curation, methodology, software, supervision, writing – review and editing. **Kris Verheyen:** methodology. **Ramona Werner:** investigation, writing – review and editing. **Jürgen Bauhus:** conceptualization, funding acquisition, methodology, project administration, supervision, writing – review and editing.

Acknowledgments

We thank Kris Ceunen, Iris Moeneclaey, Bingbin Wen, and Eline Lorer for assisting with the fieldwork campaign; Toon Gheyle, Stijn Willen, and Ivan Josipovic for supporting the sample preparation and scanning the samples; Leon Schmidt and Philip Nunner for assisting with sample measurement and field data digitalization; Zoé Doucet and Wolf Wildpret for preparing the IDENT-Freiburg growth inventory dataset; Céline Meredieu for coordinating the management of the ORPHEE experiment; and Bart Muys for coordinating the management of the FORBIO-Hechtel-Eksel experiment. Open Access funding enabled and organized by Projekt DEAL.

Conflicts of Interest

The authors declare no conflicts of interest.

Data Availability Statement

The data and code that support the findings of this study are openly available in Zenodo at <https://doi.org/10.5281/zenodo.16032413>. Drought data was derived from the climate data obtained from the ERA5Land through the Copernicus Climate Change Service (C3S) Climate Data Store (CDS) available at <https://doi.org/10.24381/cds.e2161bac>.

References

- Agnew, C. T. 2000. “Using the SPI to Identify Drought.” *Drought Network News* 12, no. 1: 6–12.
- Aldea, J., R. Ruiz-Peinado, M. Del Río, et al. 2022. “Timing and Duration of Drought Modulate Tree Growth Response in Pure and Mixed Stands of Scots Pine and Norway Spruce.” *Journal of Ecology* 110, no. 11: 2673–2683. <https://doi.org/10.1111/1365-2745.13978>.
- Anderegg, L. D. L., W. R. L. Anderegg, and J. A. Berry. 2013. “Not all Droughts Are Created Equal: Translating Meteorological Drought Into Woody Plant Mortality.” *Tree Physiology* 33, no. 7: 701–712. <https://doi.org/10.1093/treephys/tpt044>.
- Anderegg, W. R. L. 2015. “Spatial and Temporal Variation in Plant Hydraulic Traits and Their Relevance for Climate Change Impacts on Vegetation.” *New Phytologist* 205, no. 3: 1008–1014. <https://doi.org/10.1111/nph.12907>.
- Anderegg, W. R. L., T. Klein, M. Bartlett, et al. 2016. “Meta-Analysis Reveals That Hydraulic Traits Explain Cross-Species Patterns of Drought-Induced Tree Mortality Across the Globe.” *Proceedings of the National Academy of Sciences of the United States of America* 113, no. 18: 5024–5029. <https://doi.org/10.1073/pnas.1525678113>.
- Anderegg, W. R. L., A. G. Konings, A. T. Trugman, et al. 2018. “Hydraulic Diversity of Forests Regulates Ecosystem Resilience During Drought.” *Nature* 561, no. 7724: 538–541. <https://doi.org/10.1038/s41586-018-0539-7>.
- Anderegg, W. R. L., C. Schwalm, F. Biondi, et al. 2015. “Pervasive Drought Legacies in Forest Ecosystems and Their Implications for Carbon Cycle Models.” *Science* 349, no. 6247: 528–532. <https://doi.org/10.1126/science.aab1833>.
- Anderegg, W. R. L., A. T. Trugman, G. Badgley, A. G. Konings, and J. Shaw. 2020. “Divergent Forest Sensitivity to Repeated Extreme Droughts.” *Nature Climate Change* 10, no. 12: 1091–1095. <https://doi.org/10.1038/s41558-020-00919-1>.
- Bartlett, M. K., T. Klein, S. Jansen, B. Choat, and L. Sack. 2016. “The Correlations and Sequence of Plant Stomatal, Hydraulic, and Wilting Responses to Drought.” *Proceedings of the National Academy of Sciences of the United States of America* 113, no. 46: 13098–13103. <https://doi.org/10.1073/pnas.1604088113>.
- Bastos, A., P. Ciais, P. Friedlingstein, et al. 2020. “Direct and Seasonal Legacy Effects of the 2018 Heat Wave and Drought on European Ecosystem Productivity.” *Science Advances* 6, no. 24: eaba2724. <https://doi.org/10.1126/sciadv.aba2724>.
- Bastos, A., R. Orth, M. Reichstein, P. Ciais, N. Viovy, and S. Zaehle. 2021. *Increased Vulnerability of European Ecosystems to Two Compound Dry and Hot Summers in 2018 and 2019*. *Earth Syst Dynam.*
- Bates, D., M. Mächler, B. Bolker, and S. Walker. 2015. “Fitting Linear Mixed-Effects Models Using lme4.” *Journal of Statistical Software* 67, no. 1: 1–48. <https://doi.org/10.18637/jss.v067.i01>.
- Bauhus, J., D. I. Forrester, and H. Pretzsch. 2017. “From Observations to Evidence About Effects of Mixed-Species Stands.” In *Mixed-Species Forests*, edited by H. Pretzsch, D. I. Forrester, and J. Bauhus, 27–71. Springer Berlin Heidelberg.

- Beguieria, S., B. Latorre, F. Reig, and S. M. Vicente-Serrano. 2022. *SPEI Global Drought Monitor*. <https://spei.csic.es/map/>.
- Beguieria, S., and S. M. Vicente-Serrano. 2017. *Package 'spei'. Calculation of the Standardised Precipitation-Evapotranspiration Index*.
- Bello, J., N. J. Hasselquist, P. Vallet, A. Kahmen, T. Perot, and N. Korboulewsky. 2019. "Complementary Water Uptake Depth of *Quercus Petraea* and *Pinus sylvestris* in Mixed Stands During an Extreme Drought." *Plant and Soil* 437, no. 1–2: 93–115. <https://doi.org/10.1007/s11104-019-03951-z>.
- Benavides, R., F. Valladares, C. Wirth, S. Müller, and M. Scherer-Lorenzen. 2019. "Intraspecific Trait Variability of Trees is Related to Canopy Species Richness in European Forests." *Perspectives in Plant Ecology, Evolution and Systematics* 36: 24–32. <https://doi.org/10.1016/j.ppees.2018.12.002>.
- Bertness, M. D., and R. Callaway. 1994. "Positive Interactions in Communities." *Trends in Ecology & Evolution* 9, no. 5: 191–193. [https://doi.org/10.1016/0169-5347\(94\)90088-4](https://doi.org/10.1016/0169-5347(94)90088-4).
- Beugnon, R., N. Le Guyader, A. Milcu, et al. 2024. "Microclimate Modulation: An Overlooked Mechanism Influencing the Impact of Plant Diversity on Ecosystem Functioning." *Global Change Biology* 30, no. 3: e17214. <https://doi.org/10.1111/gcb.17214>.
- Biondi, F., and F. Qeadan. 2008. "A Theory-Driven Approach to Tree-Ring Standardization: Defining the Biological Trend From Expected Basal Area Increment." *Tree-Ring Research* 64, no. 2: 81–96. <https://doi.org/10.3959/2008-6.1>.
- Björklund, J., G. Arx, D. Nievergelt, et al. 2019. "Scientific Merits and Analytical Challenges of Tree-Ring Densitometry." *Reviews of Geophysics* 57, no. 4: 1224–1264. <https://doi.org/10.1029/2019RG000642>.
- Blondeel, H., J. Guillemot, N. Martin-StPaul, et al. 2024. "Tree Diversity Reduces Variability in Sapling Survival Under Drought." *Journal of Ecology* 112, no. 5: 1164–1180. <https://doi.org/10.1111/1365-2745.14294>.
- Bontemps, J.-D., J.-C. Hervé, and J.-F. Dhôte. 2010. "Dominant Radial and Height Growth Reveal Comparable Historical Variations for Common Beech in North-Eastern France." *Forest Ecology and Management* 259, no. 8: 1455–1463. <https://doi.org/10.1016/j.foreco.2010.01.019>.
- Bose, A. K., J. Doležal, D. Scherrer, et al. 2024. "Revealing Legacy Effects of Extreme Droughts on Tree Growth of Oaks Across the Northern Hemisphere." *Science of the Total Environment* 926: 172049. <https://doi.org/10.1016/j.scitotenv.2024.172049>.
- Brodribb, T. J., and N. M. Holbrook. 2003. "Stomatal Closure During Leaf Dehydration, Correlation With Other Leaf Physiological Traits." *Plant Physiology* 132, no. 4: 2166–2173. <https://doi.org/10.1104/pp.103.023879>.
- Bunn, A. G. 2008. "A Dendrochronology Program Library in R (dplR)." *Dendrochronologia* 26, no. 2: 115–124. <https://doi.org/10.1016/j.dendro.2008.01.002>.
- Bunn, A. G., M. Korpela, F. Biondi, et al. 2023. *dplR: Dendrochronology Program Library in R. Version R Package Version 1.7.6*. <https://CRAN.R-project.org/package=dplR>.
- Cailleret, M., S. Jansen, E. M. R. Robert, et al. 2017. "A Synthesis of Radial Growth Patterns Preceding Tree Mortality." *Global Change Biology* 23, no. 4: 1675–1690. <https://doi.org/10.1111/gcb.13535>.
- Camarero, J. J., and E. G. de Andrés. 2024. "Deciphering Carbon Source-Sink Dynamics in Masting Tree Species Using Tree-Ring Isotopes." *Tree Physiology* 44, no. 3: tpae026. <https://doi.org/10.1093/treephys/tpae026>.
- Camarero, J. J., A. Gazol, J. C. Linares, et al. 2021. "Differences in Temperature Sensitivity and Drought Recovery Between Natural Stands and Plantations of Conifers Are Species-Specific." *Science of the Total Environment* 796: 148930. <https://doi.org/10.1016/j.scitotenv.2021.148930>.
- Cardinale, B. J., J. P. Wright, M. W. Cadotte, et al. 2007. "Impacts of Plant Diversity on Biomass Production Increase Through Time Because of Species Complementarity." *Proceedings of the National Academy of Sciences of the United States of America* 104, no. 46: 18123–18128. <https://doi.org/10.1073/pnas.0709069104>.
- Castagneri, D., G. Vacchiano, A. Hackett-Pain, R. J. DeRose, T. Klein, and A. Bottero. 2022. "Meta-Analysis Reveals Different Competition Effects on Tree Growth Resistance and Resilience to Drought." *Ecosystems* 25, no. 1: 30–43. <https://doi.org/10.1007/s10021-021-00638-4>.
- Cervellini, M., P. Zannini, M. Di Musciano, et al. 2020. "A Grid-Based Map for the Biogeographical Regions of Europe." *Biodiversity Data Journal* 8: e53720. <https://doi.org/10.3897/BDJ.8.e53720>.
- Choat, B., S. Jansen, T. J. Brodribb, et al. 2012. "Global Convergence in the Vulnerability of Forests to Drought." *Nature* 491, no. 7426: 752–755. <https://doi.org/10.1038/nature11688>.
- Colangelo, M., J. J. Camarero, M. Borghetti, A. Gazol, T. Gentilella, and F. Ripullone. 2017. "Size Matters a Lot: Drought-Affected Italian Oaks Are Smaller and Show Lower Growth Prior to Tree Death." *Frontiers in Plant Science* 8: 135. <https://doi.org/10.3389/fpls.2017.00135>.
- de Boeck, H. J., J. M. G. Bloor, J. Kreyling, et al. 2017. "Patterns and Drivers of Biodiversity–Stability Relationships Under Climate Extremes." *Journal of Ecology* 106, no. 3: 890–902. <https://doi.org/10.1111/1365-2745.12897>.
- de Micco, V., M. Carrer, C. B. K. Rathgeber, et al. 2019. "From Xylogenesis to Tree Rings: Wood Traits to Investigate Tree Response to Environmental Changes." *IAWA* 40, no. 2: 155–182. <https://doi.org/10.1163/22941932-40190246>.
- de Mil, T., and J. van den Bulcke. 2023. "Tree Core Analysis With X-Ray Computed Tomography." *Journal of Visualized Experiments* 2023: 65208. <https://doi.org/10.3791/65208>.
- de Mil, T., A. Vannoppen, H. Beeckman, J. van Acker, and J. den Bulcke. 2016. "A Field-To-Desktop Toolchain for X-Ray CT Densitometry Enables Tree Ring Analysis." *Annals of Botany* 117, no. 7: 1187–1196. <https://doi.org/10.1093/aob/mcw063>.
- Decarsin, R., J. Guillemot, G. Le Maire, et al. 2024. "Tree Drought-Mortality Risk Depends More on Intrinsic Species Resistance Than on Stand Species Diversity." *Global Change Biology* 30, no. 9: e17503. <https://doi.org/10.1111/gcb.17503>.
- Del Campo, A. D., K. Otsuki, Y. Serengil, J. A. Blanco, R. Yousefpour, and X. Wei. 2022. "A Global Synthesis on the Effects of Thinning on Hydrological Processes: Implications for Forest Management." *Forest Ecology and Management* 519: 120324. <https://doi.org/10.1016/j.foreco.2022.120324>.
- Del Río, M., G. Schütze, and H. Pretzsch. 2014. "Temporal Variation of Competition and Facilitation in Mixed Species Forests in Central Europe." *Plant Biology* 16, no. 1: 166–176. <https://doi.org/10.1111/plb.12029>.
- Depauw, L., E. de Lombaerde, E. Dhiedt, et al. 2024. "Enhancing Tree Performance Through Species Mixing: Review of a Quarter-Century of TreeDivNet Experiments Reveals Research Gaps and Practical Insights." *Current Forestry Reports* 10, no. 1: 1–20. <https://doi.org/10.1007/s40725-023-00208-y>.
- DeSoto, L., M. Cailleret, F. Sterck, et al. 2020. "Low Growth Resilience to Drought Is Related to Future Mortality Risk in Trees." *Nature Communications* 11, no. 1: 545. <https://doi.org/10.1038/s41467-020-14300-5>.
- Dietrich, V., G. Skiadasis, F. Schnabel, et al. 2024. "Identifying the Impact of Climate Extremes on Radial Growth in Young Tropical Trees: A Comparison of Inventory and Tree-Ring Based Estimates." *Dendrochronologia* 86: 126237. <https://doi.org/10.1016/j.dendro.2024.126237>.

- D'Orangeville, L., J. Maxwell, D. Kneeshaw, et al. 2018. "Drought Timing and Local Climate Determine the Sensitivity of Eastern Temperate Forests to Drought." *Global Change Biology* 24, no. 6: 2339–2351. <https://doi.org/10.1111/gcb.14096>.
- Duchesne, L., D. Houle, R. Ouimet, L. Caldwell, M. Gloor, and R. Brienen. 2019. "Large Apparent Growth Increases in Boreal Forests Inferred From Tree-Rings Are an Artefact of Sampling Biases." *Scientific Reports* 9, no. 1: 6832. <https://doi.org/10.1038/s41598-019-43243-1>.
- Etzold, S., F. Sterck, A. K. Bose, et al. 2022. "Number of Growth Days and Not Length of the Growth Period Determines Radial Stem Growth of Temperate Trees." *Ecology Letters* 25, no. 2: 427–439. <https://doi.org/10.1111/ele.13933>.
- Fernández-de-Uña, L., J. Martínez-Vilalta, R. Poyatos, M. Mencuccini, and N. G. McDowell. 2023. "The Role of Height-Driven Constraints and Compensations on Tree Vulnerability to Drought." *New Phytologist* 239, no. 6: 2083–2098. <https://doi.org/10.1111/nph.19130>.
- Fichtner, A., W. Härdtle, Y. Li, H. Bruelheide, M. Kunz, and G. von Oheimb. 2017. "From Competition to Facilitation: How Tree Species Respond to Neighbourhood Diversity." *Ecology Letters* 20, no. 7: 892–900. <https://doi.org/10.1111/ele.12786>.
- Fichtner, A., F. Schnabel, H. Bruelheide, et al. 2020. "Neighbourhood Diversity Mitigates Drought Impacts on Tree Growth." *Journal of Ecology* 108, no. 3: 865–875. <https://doi.org/10.1111/1365-2745.13353>.
- Forrester, D. I. 2014. "The Spatial and Temporal Dynamics of Species Interactions in Mixed-Species Forests: From Pattern to Process." *Forest Ecology and Management* 312: 282–292. <https://doi.org/10.1016/j.foreco.2013.10.003>.
- Forrester, D. I. 2017. "Ecological and Physiological Processes in Mixed Versus Monospecific Stands." In *Mixed-Species Forests*, edited by H. Pretzsch, D. I. Forrester, and J. Bauhus, 73–115. Springer Berlin Heidelberg. https://doi.org/10.1007/978-3-662-54553-9_3.
- Forrester, D. I. 2019. "Linking Forest Growth With Stand Structure: Tree Size Inequality, Tree Growth or Resource Partitioning and the Asymmetry of Competition." *Forest Ecology and Management* 447: 139–157. <https://doi.org/10.1016/j.foreco.2019.05.053>.
- Forrester, D. I., and J. Bauhus. 2016. "A Review of Processes Behind Diversity—Productivity Relationships in Forests." *Current Forestry Reports* 2, no. 1: 45–61. <https://doi.org/10.1007/s40725-016-0031-2>.
- Forrester, D. I., D. Bonal, S. Dawud, et al. 2016. "Drought Responses by Individual Tree Species Are Not Often Correlated With Tree Species Diversity in European Forests." *Journal of Applied Ecology* 53, no. 6: 1725–1734. <https://doi.org/10.1111/1365-2664.12745>.
- Forrester, D. I., and H. Pretzsch. 2015. "Tamm Review: On the Strength of Evidence When Comparing Ecosystem Functions of Mixtures With Monocultures." *Forest Ecology and Management* 356: 41–53. <https://doi.org/10.1016/j.foreco.2015.08.016>.
- Gao, S., R. Liu, T. Zhou, et al. 2018. "Dynamic Responses of Tree-Ring Growth to Multiple Dimensions of Drought." *Global Change Biology* 24, no. 11: 5380–5390. <https://doi.org/10.1111/gcb.14367>.
- Gazol, A., J. J. Camarero, R. Sánchez-Salguero, et al. 2020. "Drought Legacies Are Short, Prevail in Dry Conifer Forests and Depend on Growth Variability." *Journal of Ecology* 108, no. 6: 2473–2484. <https://doi.org/10.1111/1365-2745.13435>.
- Gazol, A., J. J. Camarero, G. Sangüesa-Barreda, et al. 2020. "Tree Species Are Differently Impacted by Cumulative Drought Stress and Present Higher Growth Synchrony in Dry Places." *Frontiers in Forests and Global Change* 3: 573346. <https://doi.org/10.3389/ffgc.2020.573346>.
- Gazol, A., A. Fajardo, and J. J. Camarero. 2023. "Contributions of Intraspecific Variation to Drought Tolerance in Trees." *Current Forestry Reports* 9, no. 6: 461–472. <https://doi.org/10.1007/s40725-023-00199-w>.
- Gessler, A., A. Bottero, J. Marshall, and M. Arend. 2020. "The Way Back: Recovery of Trees From Drought and Its Implication for Acclimation." *New Phytologist* 228, no. 6: 1704–1709. <https://doi.org/10.1111/nph.16703>.
- Gillerot, L., D. I. Forrester, A. Bottero, A. Rigling, and M. Lévesque. 2021. "Tree Neighbourhood Diversity Has Negligible Effects on Drought Resilience of European Beech, Silver Fir and Norway Spruce." *Ecosystems* 24, no. 1: 20–36. <https://doi.org/10.1007/s10021-020-00501-y>.
- Görransson, H., M. T. Bambrick, and D. L. Godbold. 2016. "Overyielding of Temperate Deciduous Tree Mixtures is Maintained Under Throughfall Reduction." *Plant and Soil* 408, no. 1–2: 285–298. <https://doi.org/10.1007/s11104-016-2930-1>.
- Grossiord, C. 2019. "Having the Right Neighbors: How Tree Species Diversity Modulates Drought Impacts on Forests." *New Phytologist* 228, no. 1: 42–49. <https://doi.org/10.1111/nph.15667>.
- Grossiord, C., A. Granier, A. Gessler, T. Jucker, and D. Bonal. 2014. "Does Drought Influence the Relationship Between Biodiversity and Ecosystem Functioning in Boreal Forests?" *Ecosystems* 17, no. 3: 394–404. <https://doi.org/10.1007/s10021-013-9729-1>.
- Grossiord, C., A. Granier, A. Gessler, M. Pollastrini, and D. Bonal. 2013. "The Influence of Tree Species Mixture on Ecosystem-Level Carbon Accumulation and Water Use in a Mixed Boreal Plantation." *Forest Ecology and Management* 298: 82–92. <https://doi.org/10.1016/j.foreco.2013.03.001>.
- Grossiord, C., A. Granier, S. Ratcliffe, et al. 2014. "Tree Diversity Does Not Always Improve Resistance of Forest Ecosystems to Drought." *Proceedings of the National Academy of Sciences of the United States of America* 111, no. 41: 14812–14815. <https://doi.org/10.1073/pnas.1411970111>.
- Grossiord, C., S. Sevanto, D. Bonal, et al. 2019. "Prolonged Warming and Drought Modify Belowground Interactions for Water Among Coexisting Plants." *Tree Physiology* 39, no. 1: 55–63. <https://doi.org/10.1093/treephys/tpy080>.
- Grote, R., A. Gessler, R. Hommel, W. Poschenrieder, and E. Priesack. 2016. "Importance of Tree Height and Social Position for Drought-Related Stress on Tree Growth and Mortality." *Trees* 30, no. 5: 1467–1482. <https://doi.org/10.1007/s00468-016-1446-x>.
- Guerrero-Ramírez, N. R., D. Craven, P. B. Reich, et al. 2017. "Diversity-Dependent Temporal Divergence of Ecosystem Functioning in Experimental Ecosystems." *Nature Ecology & Evolution* 1, no. 11: 1639–1642. <https://doi.org/10.1038/s41559-017-0325-1>.
- Guillemot, J., and N. Martin-StPaul. 2024. "Tree Growth Strategies Mediate Drought Resistance in Species-Diverse Forests." *Tree Physiology* 44, no. 11: tpae141. <https://doi.org/10.1093/treephys/tpae141>.
- Guisset, C., M. Dendoncker, C. Vincke, and Q. Ponette. 2024. "Drought Timing, Intensity, and Consecutiveness Have More Influence on Douglas Fir Growth Response Than Site Conditions and Stand Density in European Temperate Climate." *Forest Ecology and Management* 569: 122177. <https://doi.org/10.1016/j.foreco.2024.122177>.
- Haberstroh, S., and C. Werner. 2022. "The Role of Species Interactions for Forest Resilience to Drought." *Plant Biology* 24, no. 7: 1098–1107. <https://doi.org/10.1111/plb.13415>.
- Hajek, P., R. M. Link, C. A. Nock, et al. 2022. "Mutually Inclusive Mechanisms of Drought-Induced Tree Mortality." *Global Change Biology* 28, no. 10: 3365–3378. <https://doi.org/10.1111/gcb.16146>.
- Hari, V., O. Rakovec, Y. Markonis, M. Hanel, and R. Kumar. 2020. "Increased Future Occurrences of the Exceptional 2018–2019 Central European Drought Under Global Warming." *Scientific Reports* 10, no. 1: 12207. <https://doi.org/10.1038/s41598-020-68872-9>.
- Hartmann, H., A. Bastos, A. J. Das, et al. 2022. "Climate Change Risks to Global Forest Health: Emergence of Unexpected Events of Elevated

- Tree Mortality Worldwide.” *Annual Review of Plant Biology* 73: 673–702. <https://doi.org/10.1146/annurev-arplant-102820-012804>.
- Hegyí, F. 1974. “A Simulation Model for Managing Jack-Pine Stands Simulation.” In *Growth Models for Tree and Stand Simulation*, edited by J. Fries, vol. 30 (Research Notes, 30), 74–90.
- Huang, M., X. Wang, T. F. Keenan, and S. Piao. 2018. “Drought Timing Influences the Legacy of Tree Growth Recovery.” *Global Change Biology* 24, no. 8: 3546–3559. <https://doi.org/10.1111/gcb.14294>.
- Jacobs, K., D. Bonal, C. Collet, B. Muys, and Q. Ponette. 2021. “Mixing Increases Drought Exposure Through a Faster Growth in Beech, but Not in Oak.” *Forest Ecology and Management* 479: 118593. <https://doi.org/10.1016/j.foreco.2020.118593>.
- Jucker, T., O. Bouriaud, D. Avacaritei, and D. A. Coomes. 2014. “Stabilizing Effects of Diversity on Aboveground Wood Production in Forest Ecosystems: Linking Patterns and Processes.” *Ecology Letters* 17, no. 12: 1560–1569. <https://doi.org/10.1111/ele.12382>.
- Jucker, T., C. Grossiord, D. Bonal, O. Bouriaud, A. Gessler, and D. A. Coomes. 2017. “Detecting the Fingerprint of Drought Across Europe’s Forests: Do Carbon Isotope Ratios and Stem Growth Rates Tell Similar Stories?” *Forest Ecosystems* 4, no. 1: 24. <https://doi.org/10.1186/s40663-017-0111-1>.
- Jucker, T., J. Koricheva, L. Finér, O. Bouriaud, G. Iacopetti, and D. A. Coomes. 2020. “Good Things Take Time—Diversity Effects on Tree Growth Shift From Negative to Positive During Stand Development in Boreal Forests.” *Journal of Ecology* 108, no. 6: 2198–2211. <https://doi.org/10.1111/1365-2745.13464>.
- Jump, A. S., P. Ruiz-Benito, S. Greenwood, et al. 2017. “Structural Overshoot of Tree Growth With Climate Variability and the Global Spectrum of Drought-Induced Forest Dieback.” *Global Change Biology* 23, no. 9: 3742–3757. <https://doi.org/10.1111/gcb.13636>.
- Kambach, S., E. Allan, S. Bilodeau-Gauthier, et al. 2019. “How Do Trees Respond to Species Mixing in Experimental Compared to Observational Studies?” *Ecology and Evolution* 9, no. 19: 11254–11265. <https://doi.org/10.1002/ece3.5627>.
- Kannenberg, S. A., J. T. Maxwell, N. Pederson, L. D’Orangeville, D. L. Ficklin, and R. P. Phillips. 2019. “Drought Legacies Are Dependent on Water Table Depth, Wood Anatomy and Drought Timing Across the Eastern US.” *Ecology Letters* 22, no. 1: 119–127. <https://doi.org/10.1111/ele.13173>.
- Kannenberg, S. A., K. A. Novick, M. R. Alexander, et al. 2019. “Linking Drought Legacy Effects Across Scales: From Leaves to Tree Rings to Ecosystems.” *Global Change Biology* 25, no. 9: 2978–2992. <https://doi.org/10.1111/gcb.14710>.
- Kannenberg, S. A., C. R. Schwalm, and W. R. L. Anderegg. 2020. “Ghosts of the Past: How Drought Legacy Effects Shape Forest Functioning and Carbon Cycling.” *Ecology Letters* 23, no. 5: 891–901. <https://doi.org/10.1111/ele.13485>.
- Körner, C. 2019. “No Need for Pipes When the Well is Dry—a Comment on Hydraulic Failure in Trees.” *Tree Physiology* 39, no. 5: 695–700. <https://doi.org/10.1093/treephys/tpz030>.
- Laliberté, E., and P. Legendre. 2010. “A Distance-Based Framework for Measuring Functional Diversity From Multiple Traits.” *Ecology* 91, no. 1: 299–305. <https://doi.org/10.1890/08-2244.1>.
- Laliberté, E., P. Legendre, and B. Shipley. 2014. *Package ‘FD’. Measuring Functional Diversity From Multiple Traits, and Other Tools for Functional Ecology*. R Package Version 1.0-12. Version 1.0-12.
- Lehmann, M. M., V. Vitali, P. Schuler, M. Leuenberger, and M. Saurer. 2021. “More Than Climate: Hydrogen Isotope Ratios in Tree Rings as Novel Plant Physiological Indicator for Stress Conditions.” *Dendrochronologia* 65: 125788. <https://doi.org/10.1016/j.dendro.2020.125788>.
- Lempereur, M., N. K. Martin-StPaul, C. Damesin, et al. 2015. “Growth Duration is a Better Predictor of Stem Increment Than Carbon Supply in a Mediterranean Oak Forest: Implications for Assessing Forest Productivity Under Climate Change.” *New Phytologist* 207, no. 3: 579–590. <https://doi.org/10.1111/nph.13400>.
- Leuschner, C., H. F. Jungkunst, and S. Fleck. 2009. “Functional Role of Forest Diversity: Pros and Cons of Synthetic Stands and Across-Site Comparisons in Established Forests.” *Basic and Applied Ecology* 10, no. 1: 1–9. <https://doi.org/10.1016/j.baae.2008.06.001>.
- Liu, X., Y. Huang, L. Chen, et al. 2022. “Species Richness, Functional Traits and Climate Interactively Affect Tree Survival in a Large Forest Biodiversity Experiment.” *Journal of Ecology* 110, no. 10: 2522–2531. <https://doi.org/10.1111/1365-2745.13970>.
- Lloret, F., E. G. Keeling, and A. Sala. 2011. “Components of Tree Resilience: Effects of Successive Low-Growth Episodes in Old Ponderosa Pine Forests.” *Oikos* 120, no. 12: 1909–1920. <https://doi.org/10.1111/j.1600-0706.2011.19372.x>.
- Loreau, M., M. Barbier, E. Filotas, et al. 2021. “Biodiversity as Insurance: From Concept to Measurement and Application.” *Biological Reviews* 96, no. 5: 2333–2354. <https://doi.org/10.1111/brv.12756>.
- Loreau, M., and A. Hector. 2001. “Partitioning Selection and Complementarity in Biodiversity Experiments.” *Nature* 412, no. 6842: 72–76. <https://doi.org/10.1038/35083573>.
- Lüdecke, D., A. Bartel, C. Schwemmer, C. Powell, A. Djalovski, and J. Titz. 2024. *Package ‘sjPlot’*. R Package Version 2.8.16. <https://strengeljacob.github.io/sjPlot/>.
- Lv, P., T. Rademacher, X. Huang, B. Zhang, and X. Zhang. 2022. “Prolonged Drought Duration, Not Intensity, Reduces Growth Recovery and Prevents Compensatory Growth of Oak Trees.” *Agricultural and Forest Meteorology* 326: 109183. <https://doi.org/10.1016/j.agrformet.2022.109183>.
- Maestre, F. T., R. M. Callaway, F. Valladares, and C. J. Lortie. 2009. “Refining the Stress-Gradient Hypothesis for Competition and Facilitation in Plant Communities.” *Journal of Ecology* 97, no. 2: 199–205. <https://doi.org/10.1111/j.1365-2745.2008.01476.x>.
- Mahecha, M. D., A. Bastos, F. J. Bohn, et al. 2024. “Biodiversity and Climate Extremes: Known Interactions and Research Gaps.” *Earth’s Future* 12, no. 6: e2023EF003963. <https://doi.org/10.1029/2023EF003963>.
- Martínez-Vilalta, J., and N. García-Forner. 2017. “Water Potential Regulation, Stomatal Behaviour and Hydraulic Transport Under Drought: Deconstructing the Iso/Anisohydric Concept.” *Plant, Cell & Environment* 40, no. 6: 962–976. <https://doi.org/10.1111/pce.12846>.
- Martin-StPaul, N., S. Delzon, and H. Cochard. 2017. “Plant Resistance to Drought Depends on Timely Stomatal Closure.” *Ecology Letters* 20, no. 11: 1437–1447. <https://doi.org/10.1111/ele.12851>.
- Mas, E., H. Cochard, J. Deluigi, et al. 2024. “Interactions Between Beech and Oak Seedlings Can Modify the Effects of Hotter Droughts and the Onset of Hydraulic Failure.” *New Phytologist* 241, no. 3: 1021–1034. <https://doi.org/10.1111/nph.19358>.
- Mas, E., A. Vilagrosa, L. Morcillo, M. Saurer, F. Valladares, and C. Grossiord. 2024. “Drought Effects in Mediterranean Forests Are Not Alleviated by Diversity-Driven Water Source Partitioning.” *Journal of Ecology* 112: 14387. <https://doi.org/10.1111/1365-2745.14387>.
- Masschaele, B., M. Dierick, D. van Loo, et al. 2013. “HECTOR: A 240 kV Micro-CT Setup Optimized for Research.” *Journal of Physics: Conference Series* 463: 12012. <https://doi.org/10.1088/1742-6596/463/1/012012>.
- McDowell, N. G., G. Sapes, A. Pivovarov, et al. 2022. “Mechanisms of Woody-Plant Mortality Under Rising Drought, CO₂ and Vapour Pressure Deficit.” *Nature Reviews Earth and Environment* 3, no. 5: 294–308. <https://doi.org/10.1038/s43017-022-00272-1>.

- Messier, C., J. Bauhus, R. Sousa-Silva, et al. 2022. "For the Sake of Resilience and Multifunctionality, Let's Diversify Planted Forests!" *Conservation Letters* 15, no. 1: e12829. <https://doi.org/10.1111/conl.12829>.
- Moreno, M., G. Simioni, H. Cochard, et al. 2024. "Isohydraulicity and Hydraulic Isolation Explain Reduced Hydraulic Failure Risk in an Experimental Tree Species Mixture." *Plant Physiology* 195, no. 4: 2668–2682. <https://doi.org/10.1093/plphys/kiad239>.
- Müller, L. M., and M. Bahn. 2022. "Drought Legacies and Ecosystem Responses to Subsequent Drought." *Global Change Biology* 28, no. 17: 5086–5103. <https://doi.org/10.1111/gcb.16270>.
- Muñoz-Sabater, J., E. Dutra, A. Agustí-Panareda, et al. 2021. "ERA5-Land: A State-of-the-Art Global Reanalysis Dataset for Land Applications." *Earth System Science Data* 13, no. 9: 4349–4383. <https://doi.org/10.5194/essd-13-4349-2021>.
- Nehrbass-Ahles, C., F. Babst, S. Klesse, et al. 2014. "The Influence of Sampling Design on Tree-Ring-Based Quantification of Forest Growth." *Global Change Biology* 20, no. 9: 2867–2885. <https://doi.org/10.1111/gcb.12599>.
- Paquette, A., A. Hector, B. Castagneyrol, et al. 2018. "A Million and More Trees for Science." *Nature Ecology & Evolution* 2, no. 5: 763–766. <https://doi.org/10.1038/s41559-018-0544-0>.
- Pardos, M., M. Del Río, H. Pretzsch, et al. 2021. "The Greater Resilience of Mixed Forests to Drought Mainly Depends on Their Composition: Analysis Along a Climate Gradient Across Europe." *Forest Ecology and Management* 481: 118687. <https://doi.org/10.1016/j.foreco.2020.118687>.
- Pebesma, E., and R. Bivand. 2023. *Spatial Data Science*. Chapman and Hall/CRC.
- Plaga, B. N. E., J. Bauhus, A. R. Smith, M. G. Pereira, and D. I. Forrester. 2024. "Drought-Related Mortality Modifies Mixing Effects on Light Absorption and Growth in Mono-Specific and Mixed Stands of *Fagus sylvatica*, *Alnus glutinosa*, and *Betula pendula*." *Forestry: An International Journal of Forest Research* 97, no. 3: 401–413. <https://doi.org/10.1093/forestry/cpad051>.
- Powers, J. S., G. Vargas G, T. J. Brodrribb, et al. 2020. "A Catastrophic Tropical Drought Kills Hydraulically Vulnerable Tree Species." *Global Change Biology* 26, no. 5: 3122–3133. <https://doi.org/10.1111/gcb.15037>.
- Pritzkow, C., V. Williamson, C. Szota, R. Trouvé, and S. K. Arndt. 2020. "Phenotypic Plasticity and Genetic Adaptation of Functional Traits Influences Intra-Specific Variation in Hydraulic Efficiency and Safety." *Tree Physiology* 40, no. 2: 215–229. <https://doi.org/10.1093/treephys/tpz121>.
- R Core Team. 2023. *R: A Language and Environment for Statistical Computing*. R Foundation for Statistical Computing. <https://www.R-project.org/>.
- Rakovec, O., L. Samaniego, V. Hari, et al. 2022. "The 2018–2020 Multi-Year Drought Sets a New Benchmark in Europe." *Earth's Future* 10, no. 3: e2021EF002394. <https://doi.org/10.1029/2021EF002394>.
- Ratcliffe, S., C. Wirth, T. Jucker, et al. 2017. "Biodiversity and Ecosystem Functioning Relations in European Forests Depend on Environmental Context." *Ecology Letters* 20, no. 11: 1414–1426. <https://doi.org/10.1111/ele.12849>.
- Ruffault, J., N. K. Martin-StPaul, S. Rambal, and F. Mouillot. 2013. "Differential Regional Responses in Drought Length, Intensity and Timing to Recent Climate Changes in a Mediterranean Forested Ecosystem." *Climatic Change* 117, no. 1–2: 103–117. <https://doi.org/10.1007/s10584-012-0559-5>.
- Ruffault, J., F. Pimont, H. Cochard, J.-L. Dupuy, and N. Martin-StPaul. 2022. "SurEau-Ecos v2.0: A Trait-Based Plant Hydraulics Model for Simulations of Plant Water Status and Drought-Induced Mortality at the Ecosystem Level." *Geoscientific Model Development* 15, no. 14: 5593–5626. <https://doi.org/10.5194/gmd-15-5593-2022>.
- Sachsenmaier, L., F. Schnabel, P. Dietrich, et al. 2024. "Forest Growth Resistance and Resilience to the 2018–2020 Drought Depend on Tree Diversity and Mycorrhizal Type." *Journal of Ecology* 112: 14360. <https://doi.org/10.1111/1365-2745.14360>.
- Sanchez-Martinez, P., M. Mencuccini, R. García-Valdés, et al. 2023. "Increased Hydraulic Risk in Assemblages of Woody Plant Species Predicts Spatial Patterns of Drought-Induced Mortality." *Nature Ecology & Evolution* 7, no. 10: 1620–1632. <https://doi.org/10.1038/s41559-023-02180-z>.
- Scherer-Lorenzen, M., E.-D. Schulze, A. Don, J. Schumacher, and W. Eberhard. 2007. "Exploring the Functional Significance of Forest Diversity: A New Long-Term Experiment With Temperate Tree Species (BIOTREE)." *Perspectives in Plant Ecology, Evolution and Systematics* 9, no. 2: 53–70. <https://doi.org/10.1016/j.ppees.2007.08.002>.
- Schnabel, F., K. E. Barry, S. Eckhardt, et al. 2024. "Neighbourhood Species Richness and Drought-Tolerance Traits Modulate Tree Growth and $\delta^{13}\text{C}$ Responses to Drought." *Plant Biology* 26, no. 2: 330–345. <https://doi.org/10.1111/plb.13611>.
- Schnabel, F., R. Beugnon, B. Yang, et al. 2024. "Tree Diversity Increases Forest Temperature Buffering." *bioRxiv*. <https://doi.org/10.1101/2023.09.11.556807>.
- Schnabel, F., X. Liu, M. Kunz, et al. 2021. "Species Richness Stabilizes Productivity via Asynchrony and Drought-Tolerance Diversity in a Large-Scale Tree Biodiversity Experiment." *Science Advances* 7, no. 51: eabk1643. <https://doi.org/10.1126/sciadv.abk1643>.
- Schnabel, F., S. Purruicker, L. Schmitt, et al. 2022. "Cumulative Growth and Stress Responses to the 2018–2019 Drought in a European Floodplain Forest." *Global Change Biology* 28, no. 5: 1870–1883. <https://doi.org/10.1111/gcb.16028>.
- Schuldt, B., A. Buras, M. Arend, et al. 2020. "A First Assessment of the Impact of the Extreme 2018 Summer Drought on Central European Forests." *Basic and Applied Ecology* 45: 86–103. <https://doi.org/10.1016/j.baae.2020.04.003>.
- Schwarz, J., G. Skiadasis, M. Kohler, et al. 2020. "Quantifying Growth Responses of Trees to Drought—A Critique of Commonly Used Resilience Indices and Recommendations for Future Studies." *Current Forestry Reports* 6, no. 3: 185–200. <https://doi.org/10.1007/s40725-020-00119-2>.
- Searle, E. B., H. Y. H. Chen, and A. Paquette. 2022. "Higher Tree Diversity is Linked to Higher Tree Mortality." *Proceedings of the National Academy of Sciences of the United States of America* 119, no. 19: e2013171119. <https://doi.org/10.1073/pnas.2013171119>.
- Senf, C., A. Buras, C. S. Zang, A. Rammig, and R. Seidl. 2020. "Excess Forest Mortality is Consistently Linked to Drought Across Europe." *Nature Communications* 11, no. 1: 6200. <https://doi.org/10.1038/s41467-020-19924-1>.
- Serrano-León, H., R. Nitschke, M. Scherer-Lorenzen, and D. I. Forrester. 2022. "Intra-Specific Leaf Trait Variability of *F. sylvatica*, *Q. Petraea* and *P. abies* in Response to Inter-Specific Competition and Implications for Forest Functioning." *Tree Physiology* 42, no. 2: 253–272. <https://doi.org/10.1093/treephys/tpab109>.
- Shovon, T. A., H. Auge, J. Haase, and C. A. Nock. 2024. "Positive Effects of Tree Species Diversity on Productivity Switch to Negative After Severe Drought Mortality in a Temperate Forest Experiment." *Global Change Biology* 30, no. 3: e17252. <https://doi.org/10.1111/gcb.17252>.
- Skiadasis, G., J.-M. Leban, F. Schnabel, et al. 2025. "Interacting and Dynamic Effects of Species and Structural Diversity Promote Annual Woody Biomass Production in a Tropical Tree Diversity Experiment." *Forest Ecology and Management* 593: 122844. <https://doi.org/10.1016/j.foreco.2025.122844>.
- Slette, I. J., A. K. Post, M. Awad, et al. 2019. "How Ecologists Define Drought, and Why We Should Do Better." *Global Change Biology* 25, no. 10: 3193–3200. <https://doi.org/10.1111/gcb.14747>.

- Smith-Martin, C. M., R. Muscarella, R. Ankori-Karlinsky, et al. 2023. "Hydraulic Traits Are Not Robust Predictors of Tree Species Stem Growth During a Severe Drought in a Wet Tropical Forest." *Functional Ecology* 37, no. 2: 447–460. <https://doi.org/10.1111/1365-2435.14235>.
- Soliveres, S., C. Smit, and F. T. Maestre. 2015. "Moving Forward on Facilitation Research: Response to Changing Environments and Effects on the Diversity, Functioning and Evolution of Plant Communities." *Biological Reviews of the Cambridge Philosophical Society* 90, no. 1: 297–313. <https://doi.org/10.1111/brv.12110>.
- Song, Y., L. Poorter, A. Horsting, S. Delzon, and F. Sterck. 2022. "Pit and Tracheid Anatomy Explain Hydraulic Safety But Not Hydraulic Efficiency of 28 Conifer Species." *Journal of Experimental Botany* 73, no. 3: 1033–1048. <https://doi.org/10.1093/jxb/erab449>.
- Taylor, A. R., B. Gao, and H. Y. H. Chen. 2020. "The Effect of Species Diversity on Tree Growth Varies During Forest Succession in the Boreal Forest of Central Canada." *Forest Ecology and Management* 455: 117641. <https://doi.org/10.1016/j.foreco.2019.117641>.
- Toïgo, M., P. Vallet, V. Tuilleras, et al. 2015. "Species Mixture Increases the Effect of Drought on Tree Ring Density, but Not on Ring Width, in *Quercus petraea*–*Pinus sylvestris* Stands." *Forest Ecology and Management* 345: 73–82. <https://doi.org/10.1016/j.foreco.2015.02.019>.
- Torres-Ruiz, J. M., H. Cochard, S. Delzon, et al. 2024. "Plant Hydraulics at the Heart of Plant, Crops and Ecosystem Functions in the Face of Climate Change." *New Phytologist* 241, no. 3: 984–999. <https://doi.org/10.1111/nph.19463>.
- Trogisch, S., X. Liu, G. Rutten, et al. 2021. "The Significance of Tree-Tree Interactions for Forest Ecosystem Functioning." *Basic and Applied Ecology* 55: 33–52. <https://doi.org/10.1016/j.baae.2021.02.003>.
- Tumajer, J., and V. Treml. 2019. "Disentangling the Effects of Disturbance, Climate and Tree Age on Xylem Hydraulic Conductivity of *Betula pendula*." *Annals of Botany* 123, no. 5: 783–792. <https://doi.org/10.1093/aob/mcy209>.
- Urgoiti, J., C. Messier, W. S. Keeton, M. Belluau, and A. Paquette. 2023. "Functional Diversity and Identity Influence the Self-Thinning Process in Young Forest Communities." *Journal of Ecology* 111: 2010–2022. <https://doi.org/10.1111/1365-2745.14158>.
- van de Peer, T., K. Verheyen, Q. Ponette, N. N. Setiawan, and B. Muys. 2018. "Overyielding in Young Tree Plantations Is Driven by Local Complementarity and Selection Effects Related to Shade Tolerance." *Journal of Ecology* 106, no. 3: 1096–1105. <https://doi.org/10.1111/1365-2745.12839>.
- van den Bulcke, J., M. A. Boone, J. Dhaene, et al. 2019. "Advanced X-Ray CT Scanning Can Boost Tree Ring Research for Earth System Sciences." *Annals of Botany* 124, no. 5: 837–847. <https://doi.org/10.1093/aob/mcz126>.
- van den Bulcke, J., E. L. G. Wernersson, M. Dierick, et al. 2014. "3D Tree-Ring Analysis Using Helical X-Ray Tomography." *Dendrochronologia* 32, no. 1: 39–46. <https://doi.org/10.1016/j.dendro.2013.07.001>.
- van Kampen, R., N. Fisichelli, Y.-J. Zhang, and J. Wason. 2022. "Drought Timing and Species Growth Phenology Determine Intra-Annual Recovery of Tree Height and Diameter Growth." *AoB Plants* 14, no. 3: plac012. <https://doi.org/10.1093/aobpla/plac012>.
- Vannoppen, A., P. Boeckx, T. de Mil, et al. 2018. "Climate Driven Trends in Tree Biomass Increment Show Asynchronous Dependence on Tree-Ring Width and Wood Density Variation." *Dendrochronologia* 48: 40–51. <https://doi.org/10.1016/j.dendro.2018.02.001>.
- Verheyen, K., M. Vanhellefont, H. Auge, et al. 2016. "Contributions of a Global Network of Tree Diversity Experiments to Sustainable Forest Plantations." *Ambio* 45, no. 1: 29–41. <https://doi.org/10.1007/s13280-015-0685-1>.
- Vicente-Serrano, S. M., S. Beguería, and J. I. López-Moreno. 2010. "A Multiscalar Drought Index Sensitive to Global Warming: The Standardized Precipitation Evapotranspiration Index." *Journal of Climate* 23, no. 7: 1696–1718. <https://doi.org/10.1175/2009JCLI2909.1>.
- Vilonen, L., M. Ross, and M. D. Smith. 2022. "What Happens After Drought Ends: Synthesizing Terms and Definitions." *New Phytologist* 235, no. 2: 420–431. <https://doi.org/10.1111/nph.18137>.
- Visser, H., M. van der Maaten-Theunissen, and E. van der Maaten. 2023. "BAI BAI Bias—An Evaluation of Uncertainties in Calculating Basal Area Increments From Cores." *Dendrochronologia* 78: 126066. <https://doi.org/10.1016/j.dendro.2023.126066>.
- Vitali, V., P. Schuler, M. Holloway-Phillips, et al. 2024. "Finding Balance: Tree-Ring Isotopes Differentiate Between Acclimation and Stress-Induced Imbalance in a Long-Term Irrigation Experiment." *Global Change Biology* 30, no. 3: e17237. <https://doi.org/10.1111/gcb.17237>.
- Vlassenbroeck, J., B. Masschaele, M. Dierick, et al. 2007. "Recent Developments in the Field of X-Ray Nano- and Micro-CT at the Centre for X-Ray Tomography of the Ghent University." *Microscopy and Microanalysis* 13: 184–185. <https://doi.org/10.1017/S1431927607077379>.
- Wang, M., K. Calders, H. Verbeeck, et al. 2024. "Exploring the Influence of Tree Species Richness on Vertical Structure Variability in Young Plantations Using Terrestrial Laser Scanning." *Forest Ecology and Management* 554: 121662. <https://doi.org/10.1016/j.foreco.2023.121662>.
- Wu, X., H. Liu, X. Li, et al. 2018. "Differentiating Drought Legacy Effects on Vegetation Growth Over the Temperate Northern Hemisphere." *Global Change Biology* 24, no. 1: 504–516. <https://doi.org/10.1111/gcb.13920>.
- Zang, C. S., A. Buras, A. Esquivel-Muelbert, A. S. Jump, A. Rigling, and A. Rammig. 2020. "Standardized Drought Indices in Ecological Research: Why One Size Does Not Fit All." *Global Change Biology* 26, no. 2: 322–324. <https://doi.org/10.1111/gcb.14809>.
- Zapater, M., C. Hossann, N. Bréda, C. Bréchet, D. Bonal, and A. Granier. 2011. "Evidence of Hydraulic Lift in a Young Beech and Oak Mixed Forest Using ¹⁸O Soil Water Labelling." *Trees* 25: 885–894. <https://doi.org/10.1007/s00468-011-0563-9>.
- Zhang, S., D. Landuyt, K. Verheyen, and P. de Frenne. 2022. "Tree Species Mixing Can Amplify Microclimate Offsets in Young Forest Plantations." *Journal of Applied Ecology* 59, no. 6: 1428–1439. <https://doi.org/10.1111/1365-2664.14158>.
- Zscheischler, J., and E. M. Fischer. 2020. "The Record-Breaking Compound Hot and Dry 2018 Growing Season in Germany." *Weather and Climate Extremes* 29: 100270. <https://doi.org/10.1016/j.wace.2020.100270>.

Supporting Information

Additional supporting information can be found online in the Supporting Information section. **Data S1.**